

306/110-114 James Ruse Drive Rosehill, NSW



Resort style studio in convenient location

Located on level 3 of the 'Nesuto Apartments' resort-style complex, this studio apartment offers security parking and an easy lifestyle. Perfect opportunity for first-home buyers, investors, or downsizers who seek low-maintenance living within a holiday-style resort and with convenient location.

Price: \$250,000



Aaron Lih

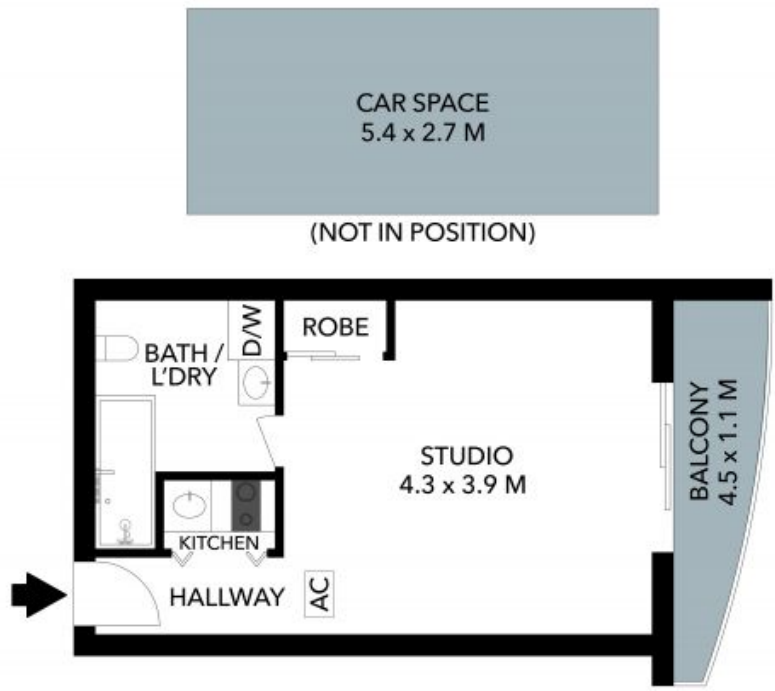
0420 825 598



Nicola Reilly

0405 203 525

306/110-114 James Ruse Drive
Rosehill



The floor plan is not to scale; measurements are indicative and in metres. Exterior elements are not in position. Plans should not be relied on. Interested parties should make and rely on their own enquiries. All other information provided has been collected from reliable sources but cannot be guaranteed for accuracy.

306/110-114 James Ruse Drive
Rosehill



The floor plan is not to scale; measurements are indicative and in metres. All features included in this 3D plan are for inspiration purposes only. This is not an exact replica of the property or the position of exterior elements. Plans should not be relied on. Interested parties should make and rely on their own enquiries.