



33 Campbellfield Avenue Bradbury, NSW

3

1

1

Family home on a prime corner block

Nestled on a 657.6m² corner block, this charming three-bedroom home in Bradbury is a perfect blend of original charm and modern convenience. Offering a spacious layout and a host of desirable features, this property is an excellent opportunity for families, first-time buyers, or investors.

Price: \$845,000



Gary Luke

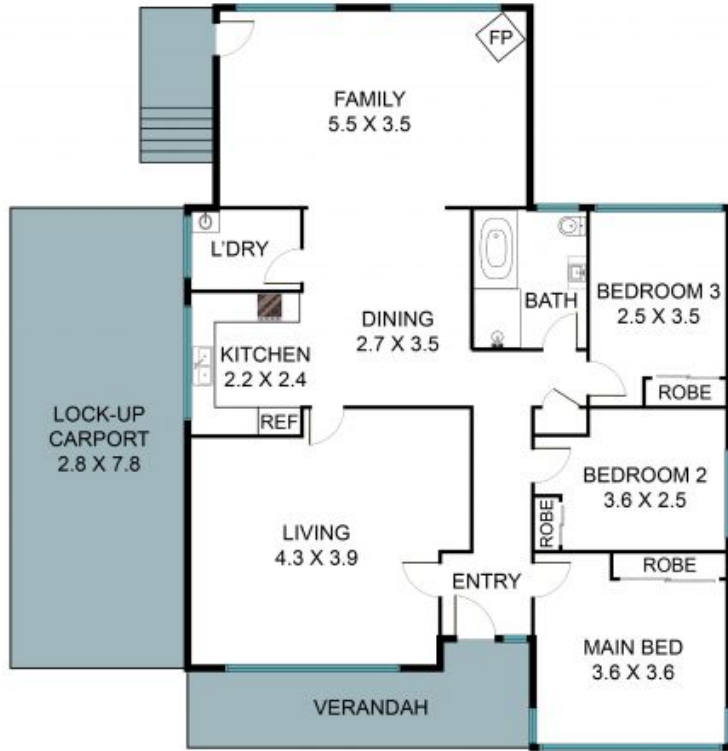
0418 451 105



Kaitlin Hall

0404 529 516

STONE



33 Campbellfield Ave, Bradbury NSW 2560



The floor plan is not to scale, measurements and in metres. Exterior elements are not in position.
Plans should not be relied on. Interested parties should make and rely on their own enquiries.
All other information provided has been collected from reliable sources but cannot be guaranteed for accuracy.