



1/128 Katherine Avenue Amaroo, ACT

3 

2 

2 

Charming single level residence

This charming single-level home is located in a tightly held complex, offering an ideal living opportunity for young families and downsizers alike. With a school directly opposite and a low-maintenance, single-level layout, it's perfect for those looking for convenience and ease of living. The property is within walking distance to shops and public transport, adding to its appeal.

Price: \$760,000



Jess Doolan

0477 775 773



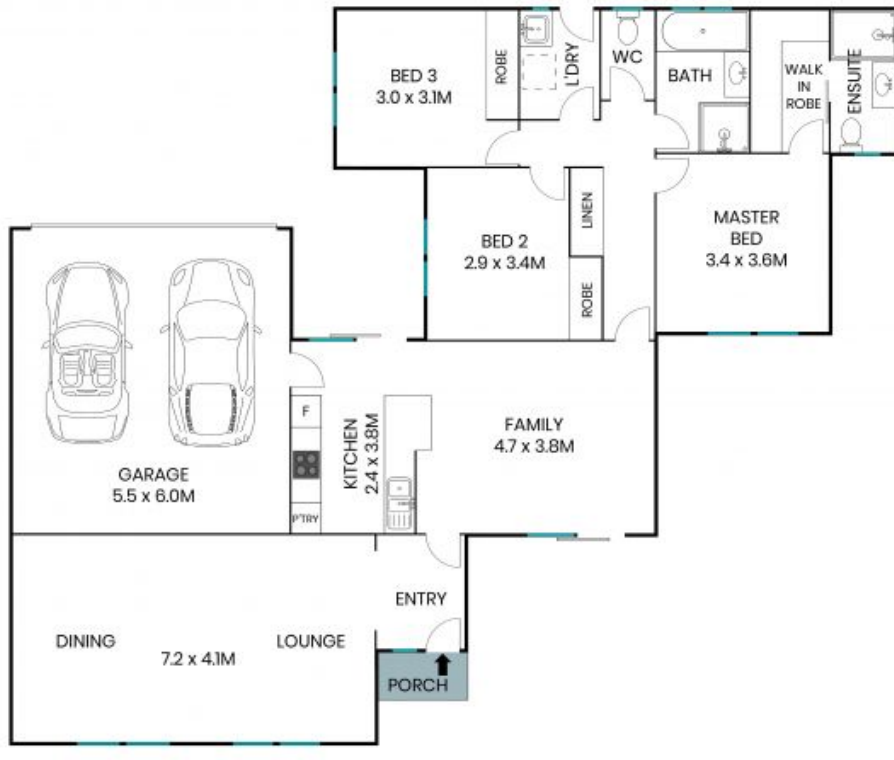
Alex Ford

0487 382 549

1/128 Katherine Avenue
Amaroo



The floor plan is not to scale; measurements are indicative and in metres. All features included in this 3D plan are for inspiration purposes only. This is not an exact replica of the property or the position of exterior elements. Plans should not be relied on. Interested parties should make and rely on their own enquiries.



The site plan and floor plan are not to scale; measurements are indicative and in metres. Bushes and trees are placed for illustration purposes. Plans should not be relied on. Interested parties should make and rely on their own enquiries. All other information provided has been collected from reliable sources but cannot be guaranteed for accuracy.