



14 Ashburner Street Manly, NSW

4 

3 

Charming Circa 1908 Family Home in the Heart of Manly

This stunning seaside family home effortlessly combines timeless period charm with modern comforts. Ideally located, it's only a 3-minute stroll to Manly Beach and a mere 4 minutes to The Corso, offering the perfect balance of convenience and coastal tranquility.

Price:

Contact Agent



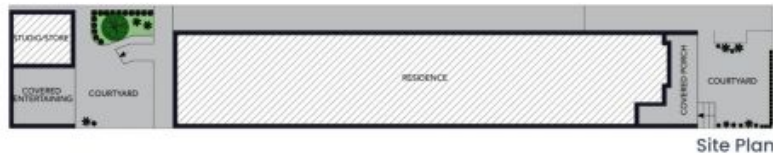
Candice Cattell

0417 311 777

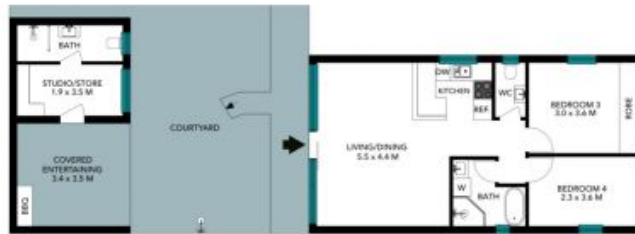


Sam Bursill

0449 969 452



Site Plan



Flat 2



Flat 1



The site plan and floor plan are not to scale; measurements are indicative and in metres. Bushes and trees are placed for illustration purposes. Plans should not be relied on. Interested parties should make and rely on their own enquiries. All other information provided has been collected from reliable sources but cannot be guaranteed for accuracy.

14 Ashburner Street
Manly



Flat 2



Flat 1



The floor plan is not to scale; measurements are indicative and in metres. All features included in this 3D plan are for inspiration purposes only. This is not an exact replica of the property or the position of exterior elements. Plans should not be relied on. Interested parties should make and rely on their own enquiries.