

159/1 Anthony Rolfe Avenue Gungahlin, ACT 2 2 1

### North facing apartment with views over Yerrabi Pond

This stunning apartment offers breathtaking views over the infinity pool and Yerrabi Pond, creating a serene and picturesque backdrop. With expansive open-plan living spaces and generously sized bedrooms, the apartment is designed for both comfort and style. The high-quality finishes and inclusions elevate the living experience, while its prime location places you within walking distance of a range of local amenities, ensuring convenience at your doorstep. A perfect blend of luxury and practicality!

**Price:** Contact Agent



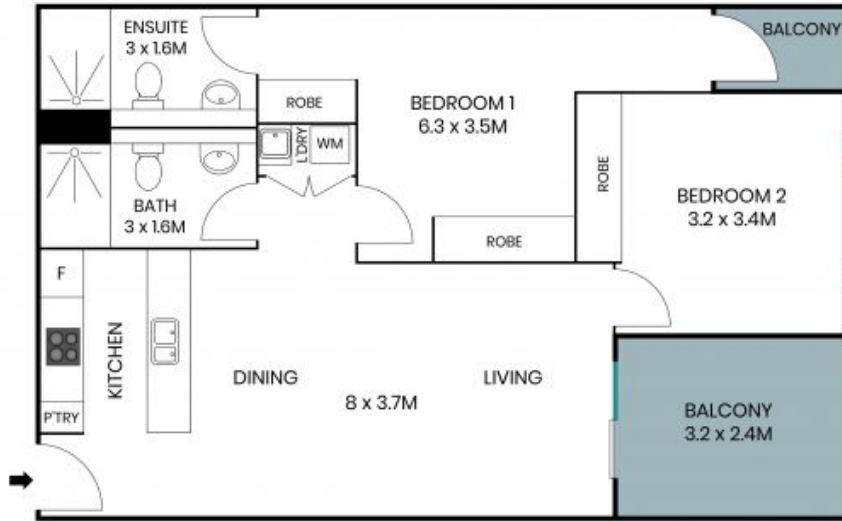
**Jess Doolan**

0477 775 773



**Alex Ford**

0487 382 549



The site plan and floor plan are not to scale; measurements are indicative and in metres. Bushes and trees are placed for illustration purposes. Plans should not be relied on. Interested parties should make and rely on their own enquiries. All other information provided has been collected from reliable sources but cannot be guaranteed for accuracy.

159/1 Anthony Rolfe Avenue  
Gungahlin



The floor plan is not to scale; measurements are indicative and in metres. All features included in this 3D plan are for inspiration purposes only. This is not an exact replica of the property or the position of exterior elements. Plans should not be relied on. Interested parties should make and rely on their own enquiries.