

5/118 Pacific Highway Roseville, NSW



Set back from highway with sunny north aspect

Everything you need, right at your doorstep. Set away from the hustle and bustle of the highway, this top-floor full brick apartment is filled with natural light from the north facing aspect.

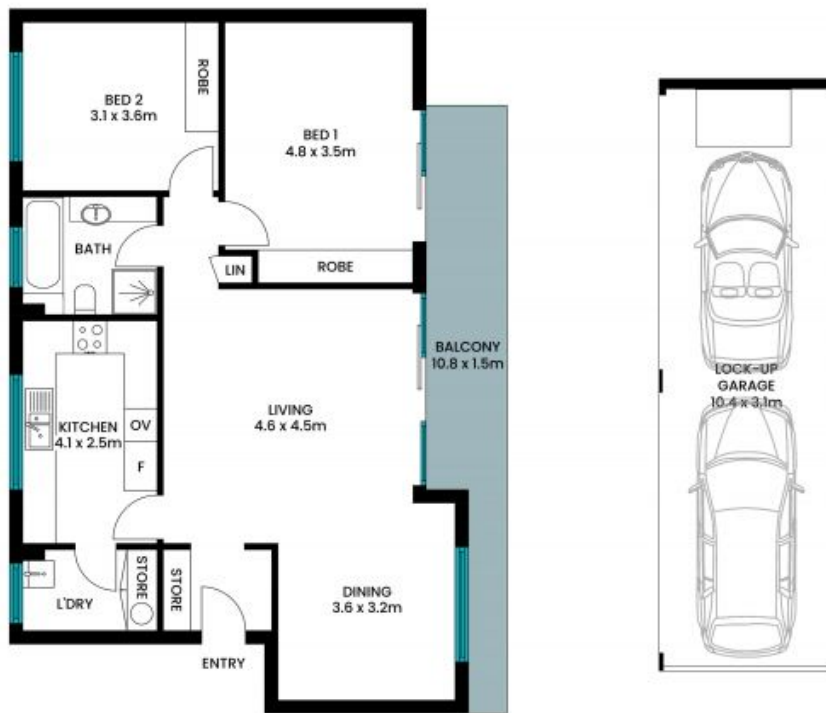
Price:

Contact Agent



Andrew Braid

0404 979 597



The site plan and floor plan are not to scale; measurements are indicative and in metres. Bushes and trees are placed for illustration purposes. Plans should not be relied on. Interested parties should make and rely on their own enquiries. All other information provided has been collected from reliable sources but cannot be guaranteed for accuracy.