



379 Pelverata Road Kaoota, TAS

3 1 2

**1900s CHARM**

Step into the charm of yesteryear with this beautifully preserved 1900s character home. Boasting exquisite pressed tin ceilings and walls throughout, this residence radiates timeless appeal.

**Price:** Offers Over \$595,000  
**Council Rates:** \$1,040.00/year (approx)



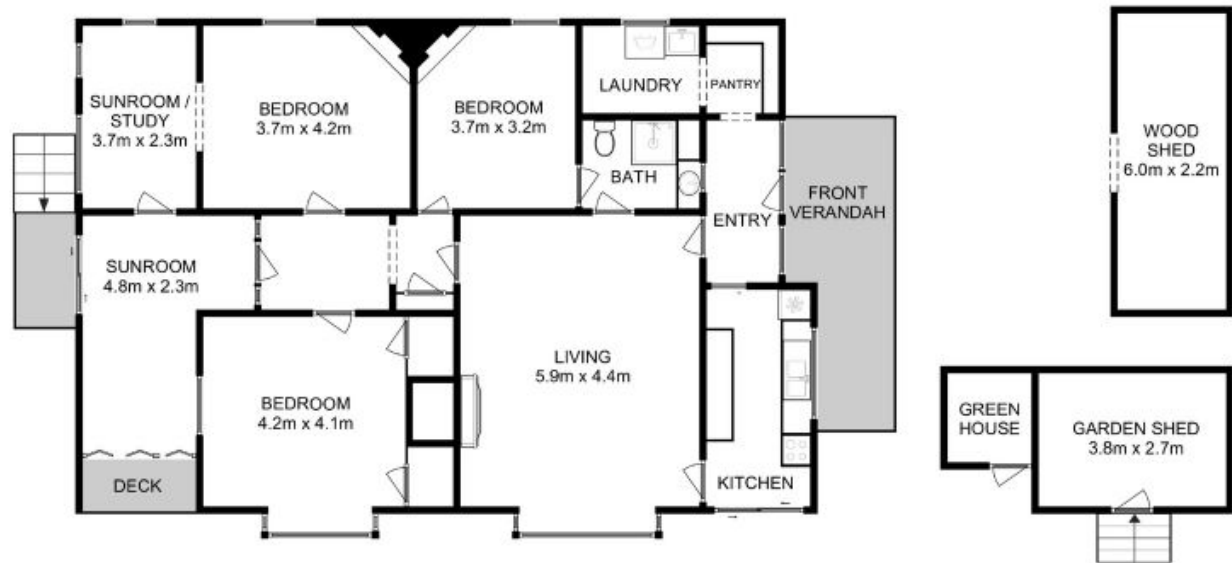
**Wendy Wade**

0418 561 538



**Wendy Wade**

0418 561 538



Total Approx. Floor Area : 148 sqm  
Total Approx. Outbuilding Area : 39 sqm

All measurements are internal and approximate.  
This plan is a sketch for illustration, not valuation.  
Produced by Open2view.com

