



64/110 Johnson Road Hillcrest, QLD

3 

1 

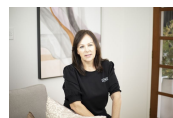
1 

Stylish Two-Level Townhouse: A Beautiful Blend of Comfort and Convenience

This stylish townhouse captures a relaxed approach to modern living, spanning two levels with an indoor-outdoor design that invites in beautiful natural light.

Price:

Offers Over \$499,000



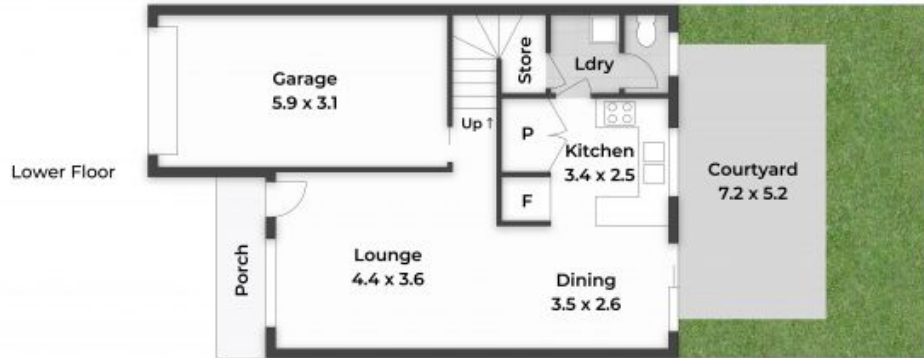
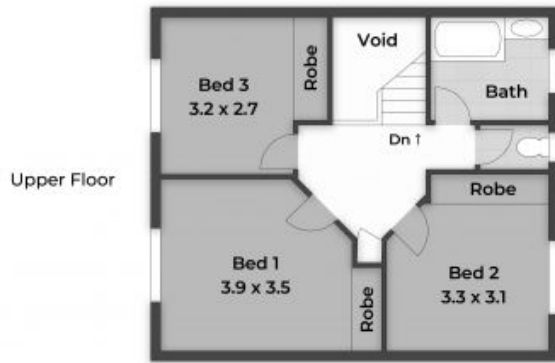
Leanne Gunn

0413 817 092



Bridgette Griffiths

0430 445 750



Approx. Floor Area | Internal 122 m² | Porch + Courtyard 39 m² | Total 161 m²

Unless otherwise stated, all dimensions are in metres. Size areas indicate the upward direction. This plan and information contained within is for illustrative purposes only and not guaranteed to be exact. Interested parties should make their own enquiries.

