



5/257 Pacific Highway Lindfield, NSW



### Move straight in to spacious on-trend living just 300m to rail

The perfect balance of size and convenience, this generously proportioned full brick apartment presents exceptional low-maintenance, on-trend living ready for you to move straight in. Situated in a security building with 111sqm (approx.) on title. The elevated corner position, the apartment benefits from an abundance of natural light streaming in from three sides, creating a bright and airy atmosphere throughout. From here, it's a level 300m walk to Lindfield train station and the array of eateries and food marketing in Lindfield village.

Price:

Contact Agent



**Andrew Braid**

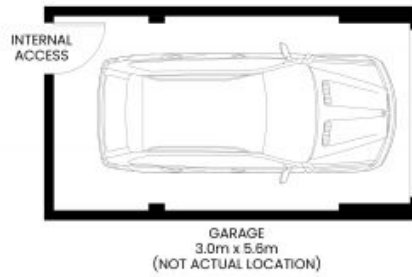
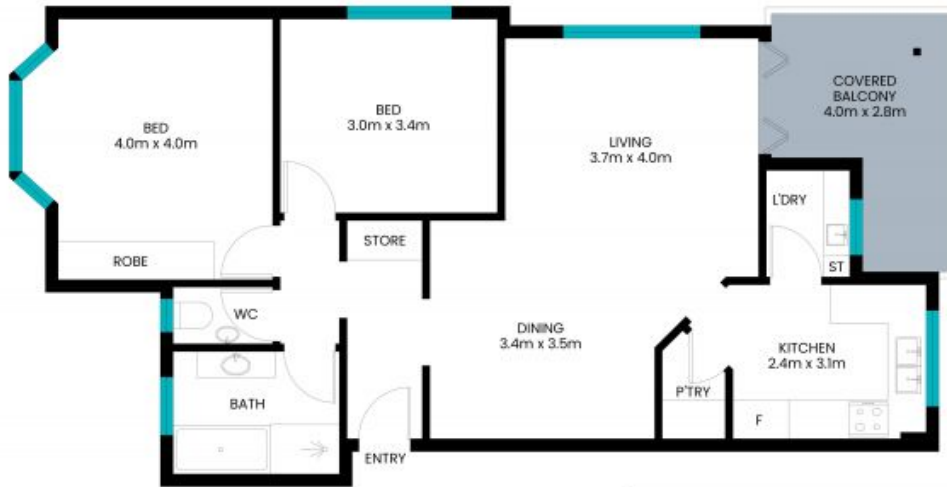
0404 979 597



**Adette Cao**

0433 412 196

5/257 Pacific Highway  
Lindfield



The site plan and floor plan are not to scale; measurements are indicative and in meters. Bushes and trees are placed for illustration purposes. Plans should not be relied on. Interested parties should make and rely on their own enquiries. All other information provided has been collected from reliable sources but cannot be guaranteed for accuracy.