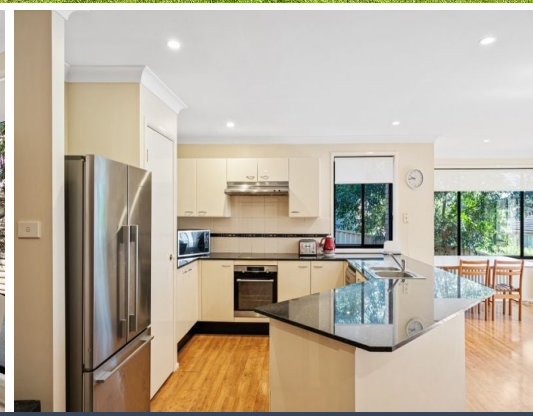
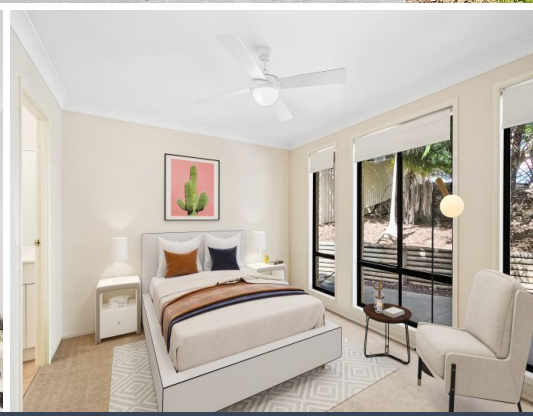


STONE



162 Woodbury Park Drive Mardi, NSW

4 2 2

Comfort & Convenience - 4 Bedroom Family Home in the Heart of Mardi!

Price: \$930,000

Nestled in a prime location, this four-bedroom brick home offers a perfect blend of comfort and convenience. With a beautiful northern aspect and peaceful surrounds, this is an ideal opportunity to secure a home with plenty of space and potential in a highly desirable neighbourhood near to all amenities.



Alyce Lewis
0423 950 626

162 Woodbury Park Drive
MARDI



SITE PLAN (NOT TO SCALE)

INTERNAL: 151sqm
EXTERNAL: 34sqm

PLEASE NOTE: These Floorplan + Site Plans have been generated for marketing purposes and are to be used as a guide only. While all care is taken, no guarantee can be given in respect of accuracy, sizes and dimensions are approximate, actual may vary.

