

15/66 Darley Road Manly, NSW



The essence of Manly living

A rare opportunity to secure a property in one of Sydney's most desirable locations. This beautifully presented unit, located on the coveted Eastern Hill of Manly, is only steps from local cafes, and a short stroll to Manly Wharf and Main Beach. Positioned at the rear of a well-maintained block, this fourth-floor apartment is designed to maximise privacy, natural light, and coastal breezes. With a thoughtfully designed interior and impressive views of Manly Harbour, this property exemplifies refined beachside living.

Price: Contact Agent
Council Rates: \$424.50 p/q
Water Rates: \$169.03 p/q
Strata Rates: \$1,250.62 p/q



Tim Mumford

0421 942 693

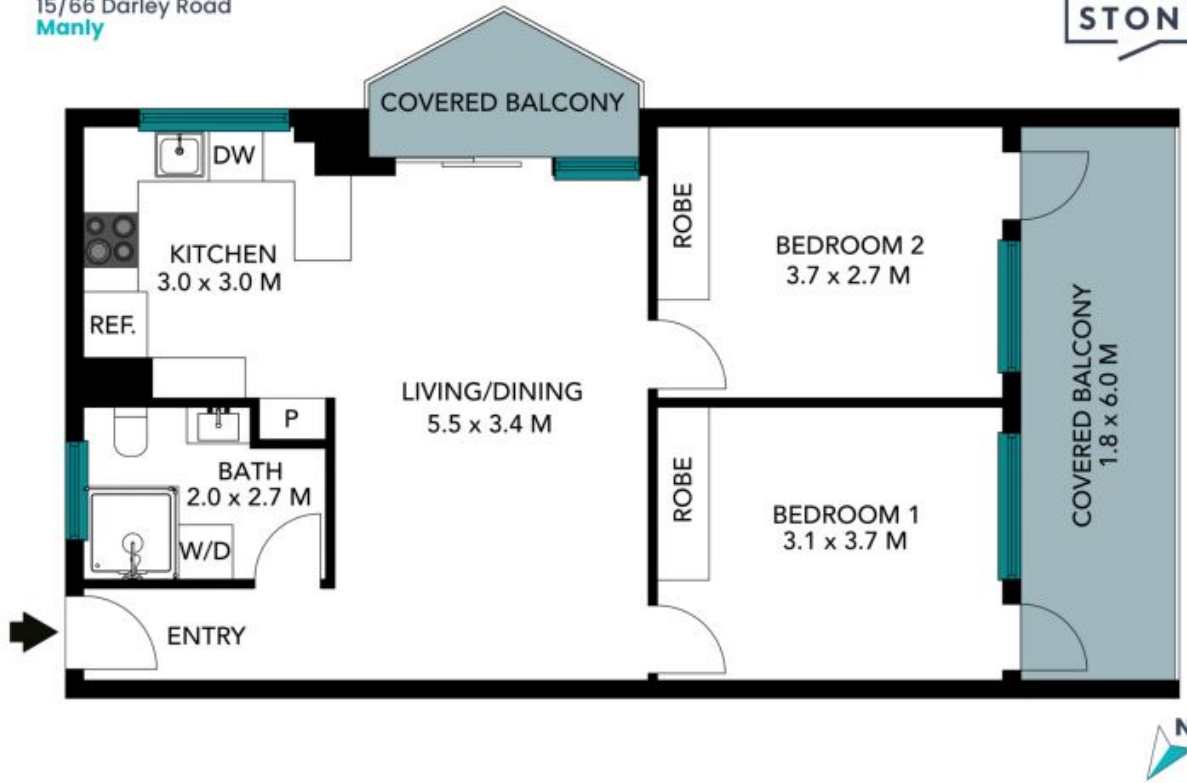


Catherine Wilson

0421 966 570

15/66 Darley Road
Manly

STONE



The floor plan is not to scale, measurements are indicative and in metres. Exterior elements are not in position. Plans should not be relied on. Interested parties should make and rely on their own enquiries. All other information provided has been collected from reliable sources but cannot be guaranteed for accuracy.

15/66 Darley Road
Manly



The floor plan is not to scale; measurements are indicative and in metres. All features included in this 3D plan are for inspiration purposes only. This is not an exact replica of the property or the position of exterior elements. Plans should not be relied on. Interested parties should make and rely on their own enquiries.