



22/40-44 Edgeworth David Avenue Waitara, NSW



Functional floor plan with pleasant outlook

The modern quality home is ideally located in a family-friendly neighborhood close to public transport, Hornsby Westfield, hospital, community facilities, and sought-after public & private schools.

Price: \$580 Per week

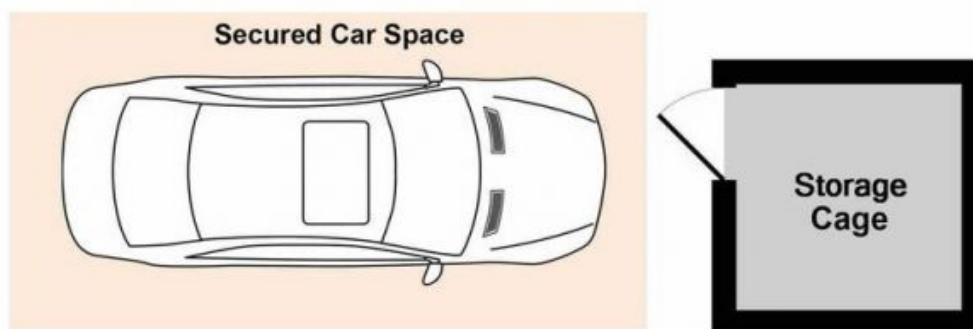
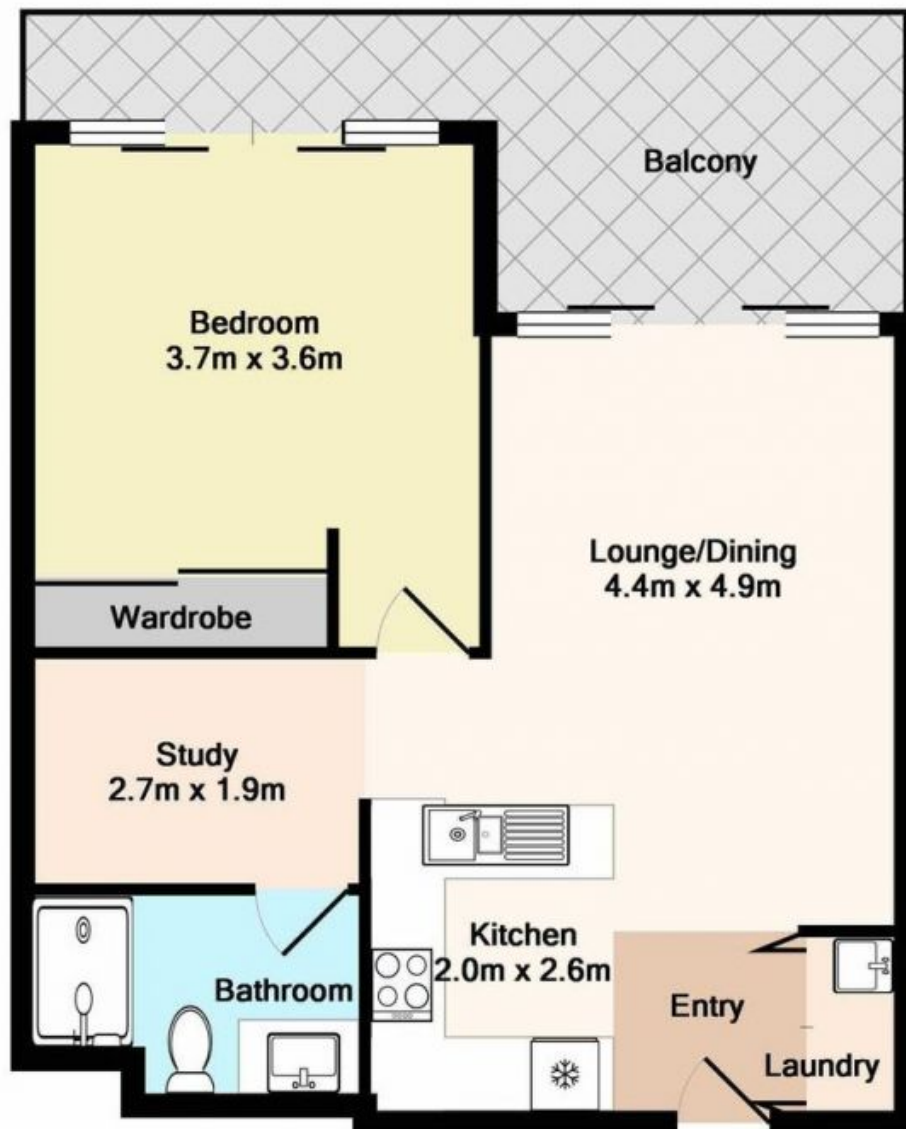
Bond: \$2,320

Available Date: 20/01/2023



Brad Sargent

0413 773 423



Dimensions are approximate. All information contained is gathered from sources we believe to be reliable. However we cannot guarantee its accuracy and interested persons should rely on their own enquiries.



**22/40-44 EDGEWORTH DAVID AVE,
WAITARA**