



3/47 Abena Avenue Crace, ACT 1 1 1

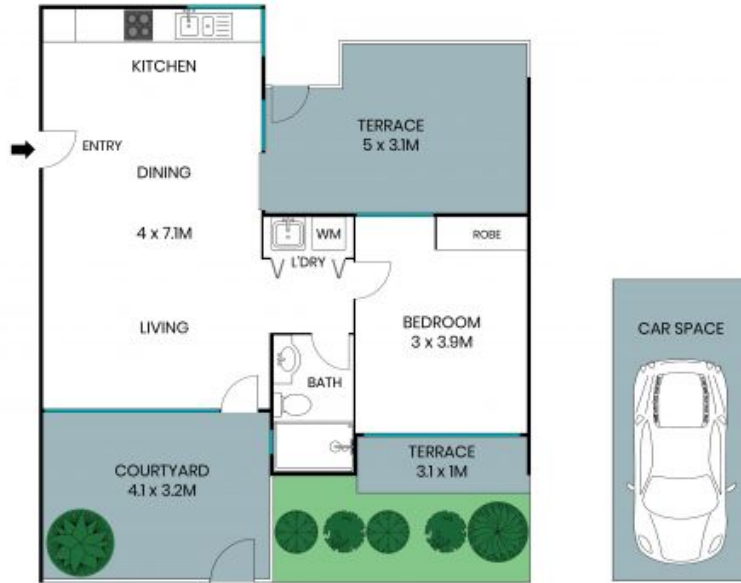
?THE DOOR IS OPEN, WELCOME HOME?

Discover the perfect blend of comfort, convenience, and style with this modern one-bedroom courtyard apartment in the boutique Abena North development. Located in the heart of Crace, this ground-level home is ideal for first-home buyers, downsizers, or investors. With just 20 apartments in the complex and only a short stroll to the vibrant Crace shopping precinct, this property offers privacy, a strong sense of community, and urban convenience.

Price: \$389,000+



Kris Hellier
0413 799 700



The site plan and floor plan are not to scale; measurements are indicative and in metres. Bushes and trees are placed for illustration purposes. Plans should not be relied on. Interested parties should make and rely on their own enquiries. All other information provided has been collected from reliable sources but cannot be guaranteed for accuracy.

3/47 Abena Avenue
Crace



The floor plan is not to scale; measurements are indicative and in metres. All features included in this 3D plan are for inspiration purposes only. This is not an exact replica of the property or the position of exterior elements. Plans should not be relied on. Interested parties should make and rely on their own enquiries.