

STONE



3/189 Pacific Highway Lindfield, NSW



### Stylish, light-filled two bedroom apartment

Set well back from the street with a desirable north-facing orientation, this whisper-quiet double-brick apartment impresses with its generous proportions and contemporary renovations of enduring quality. This garden-level residence offers a pram-friendly lifestyle and house-like appeal in an unbeatable, convenient location. Enjoy a level 650m (approx.) stroll to Roseville rail and village for seamless access to Chatswood, or walk to Lindfield for popular eateries, boutique shopping, and vibrant food markets.

**Price:** Deposit Taken

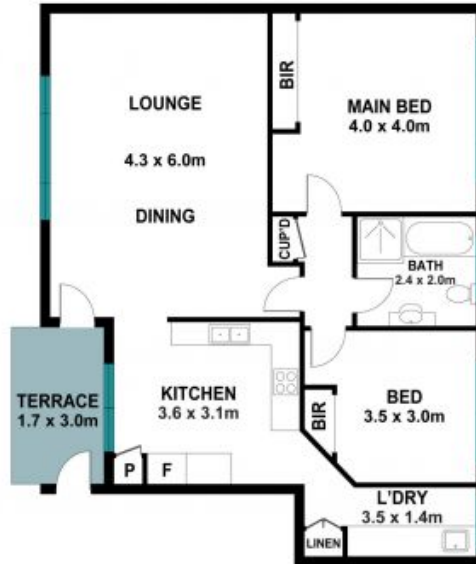
**Available Date:** 01/02/2025



**Stephanie Ryan**

0451 307 760

3/189 Pacific Highway,  
Lindfield



Internal inc. balcony: 83sqm approx.  
Parking: 24sqm approx.  
Total: 107sqm approx.



The site plan and floor plan are not to scale; measurements are indicative and in metres. Bushes and trees are placed for illustration purposes. Plans should not be relied on. Interested parties should make and rely on their own enquiries. All other information provided has been collected from reliable sources but cannot be guaranteed for accuracy.