

41/2 Rouseabout Street Lawson, ACT



Bright & Airy Home Designed for Relaxed Living

Nestled in the heart of Lawson, this beautifully designed home offers the perfect balance of modern style and everyday comfort. With an emphasis on light-filled interiors and seamless indoor-outdoor living, this residence is ideal for those who appreciate quality and convenience.

Price:

BY NEGOTIATION



Jess Smith

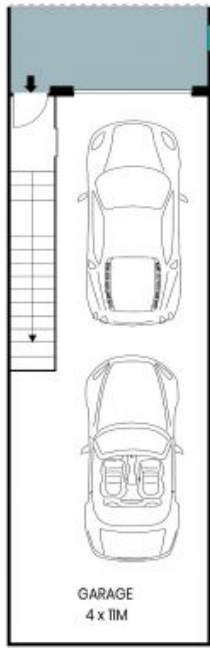
0410 125 475



Riya Detwani

0431 001 887

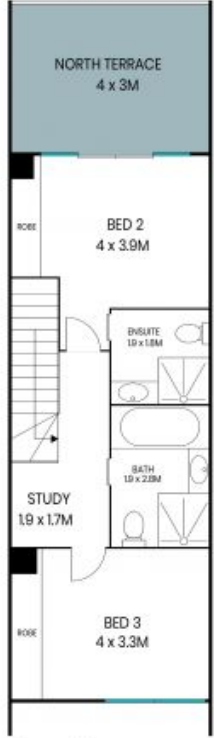
41/2 Rouseabout Street
Lawson



Lower Floor



Ground Floor



Upper Floor



The site plan and floor plan are not to scale; measurements are indicative and in metres. Bushes and trees are placed for illustration purposes. Plans should not be relied on. Interested parties should make and rely on their own enquiries. All other information provided has been collected from reliable sources but cannot be guaranteed for accuracy.

41/2 Rouseabout Street, Lawson
Lawson



Lower Floor



Ground Floor



Upper Floor



The floor plan is not to scale; measurements are indicative and in metres. All features included in this 3D plan are for inspiration purposes only. This is not an exact replica of the property or the position of exterior elements. Plans should not be relied on. Interested parties should make and rely on their own enquiries.