



10/113 Shadforth Street Mosman, NSW



### Heart of Mosman

Perfectly positioned just moments from the vibrant cafe culture of Mosman Village, this ground-floor security apartment offers an outstanding entry-level opportunity for first home buyers or savvy investors. Set within a peaceful, well-maintained building, the apartment enjoys a garden outlook with a private balcony.



**Andrew Thomas**

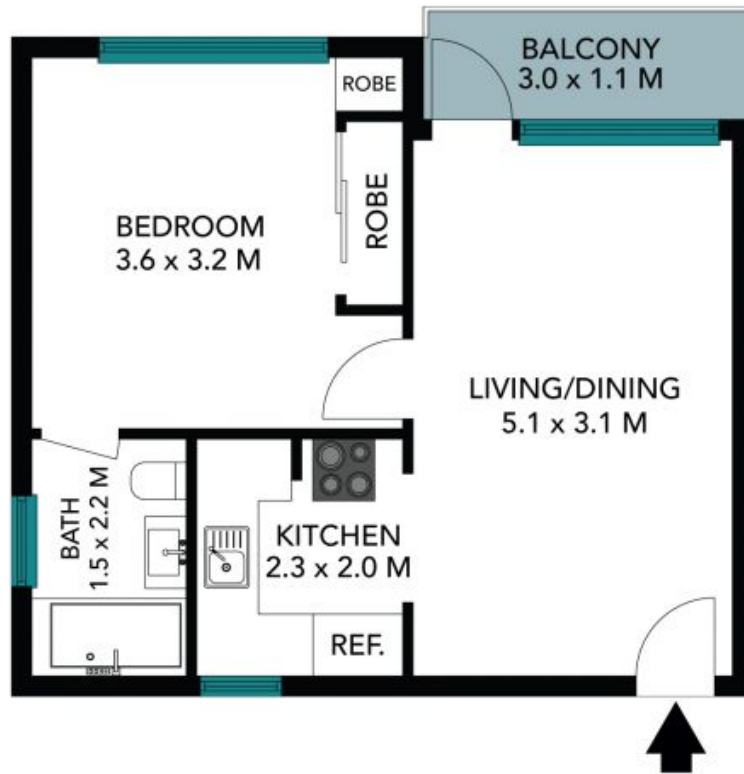
0421 281 234

10/113 Shadforth Street  
Mosman



The floor plan is not to scale; measurements are indicative and in metres. All features included in this 3D plan are for inspiration purposes only. This is not an exact replica of the property or the position of exterior elements. Plans should not be relied on. Interested parties should make and rely on their own enquiries.

10/113 Shadforth Street  
Mosman



The floor plan is not to scale, measurements are indicative and in metres. Colour elements are not in position. Plans should not be relied on. Interested parties should make and rely on their own enquiries. All other information provided has been collected from reliable sources but cannot be guaranteed for accuracy.