



23/107-109 Lane Street Wentworthville, NSW

2 1 1

Fresh and bright apartment with leafy outlooks

This two-bedroom security apartment makes an exciting prospect and is presented in great condition with well-appointed interiors, peaceful leafy outlooks and lots of future potential to add even more value. It's also well positioned right opposite Woolworths, with the railway station, local shopping and all amenities within strolling distance from the front door.

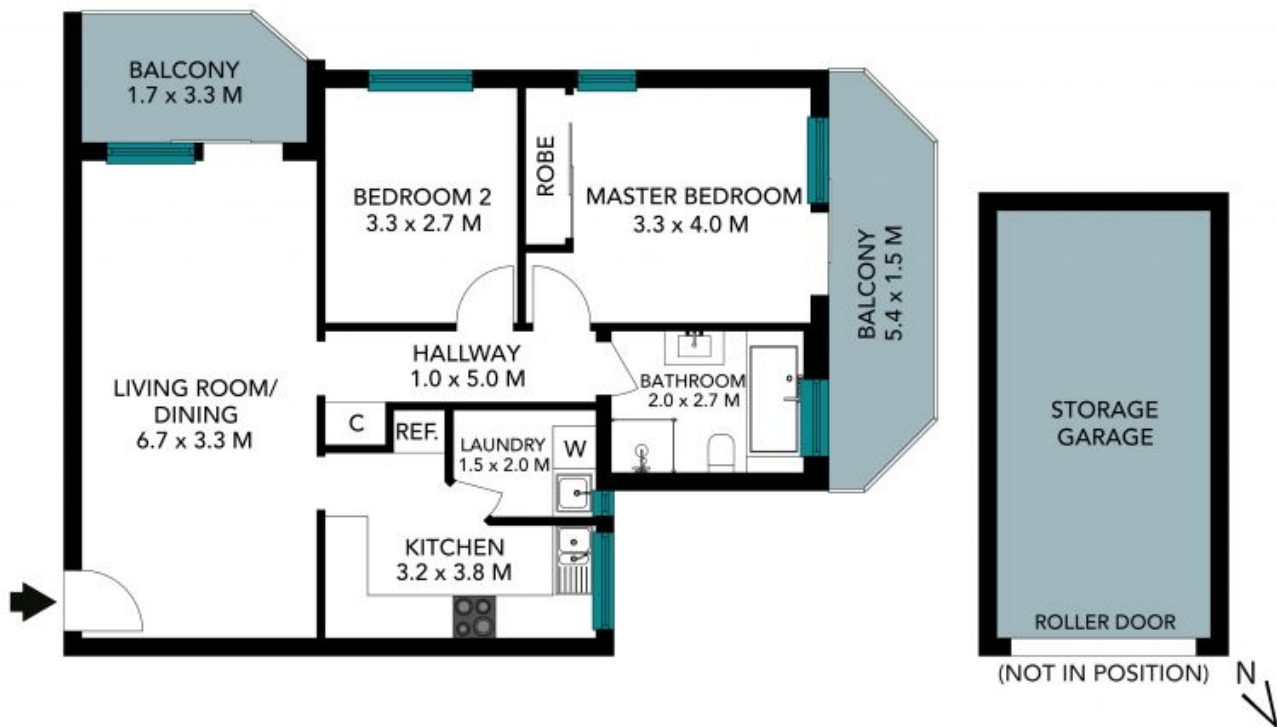
Price: Deposit taken

Available Date: 12/12/2020



Irma Rinaudo

0426 240 502



The floor plan is not to scale, measurements are indicative and in metres. Colour elements are not to position. Plans should not be relied on. Interested parties should make and rely on their own enquiries. All other information provided has been collected from reliable sources but cannot be guaranteed for accuracy.

23/107-109 Lane Street, Wentworthville





The floor plan is not to scale, measurements are indicative and in metres. All features included in this 3D plan are for inspiration purposes only. This is not an exact replica of the property or the position of exterior elements. Plans should not be relied on. Interested parties should make and rely on their own enquiries.

23/107-109 Lane Street, Wentworthville

