

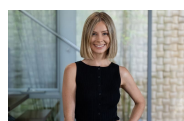
20/15 Erskineville Road Newtown, NSW



### EXCEPTIONAL, ULTRA MODERN AND SUN DRENCHED APARTMENT

A contemporary development set in the area's most desirable suburb, this faultless City-Fringe apartment is the perfect offering for an easy-care and convenient lifestyle. Bathed in Northern light the home's crisp interiors and effortless floor plan ensure a stylish and relaxed atmosphere. A short stroll to King Street attractions and Newtown and Erskineville rail station, become immersed in appeal of Inner-City living.

**Price:** Deposit Taken  
**Bond:** \$2,200  
**Available Date:** 22/05/2021



**Irma Rinaudo**

0426 240 502