



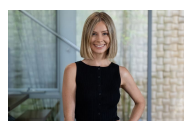
6a Riverside Crescent Marrickville, NSW



Architecturally designed home

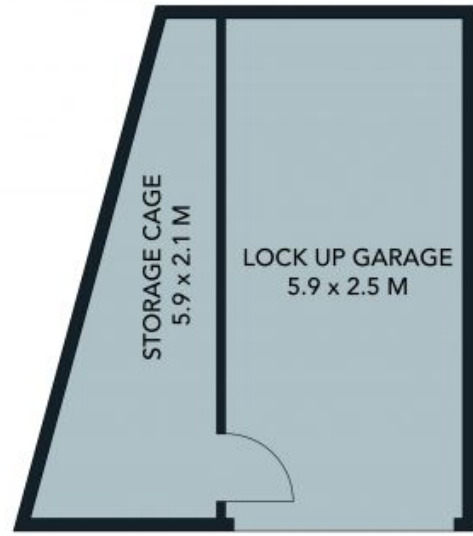
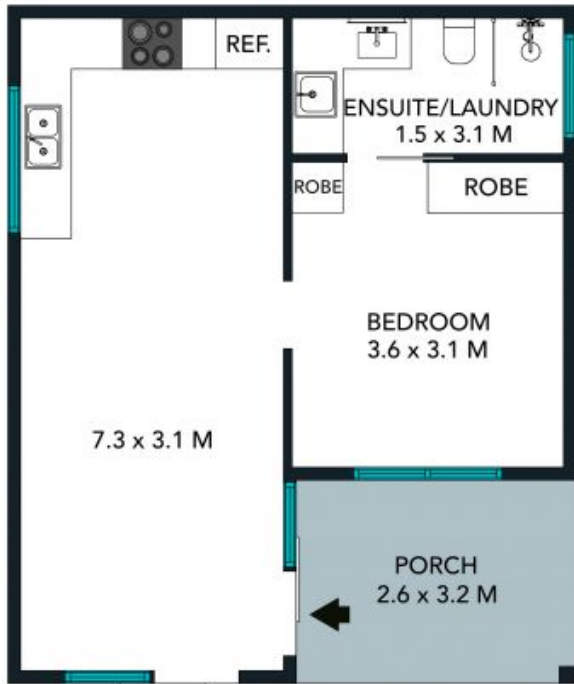
Architecturally designed home with green roof, private yard encompassing well-appointed interiors with leafy surrounds. Perfectly positioned within walking distance to the Cooks River parks, shops, cafes and transport, including train, light rail and bus.

Price: Deposit Taken
Bond: \$2,320
Available Date: 23/09/2022



Irma Rinaudo

0426 240 502



(NOT IN POSITION)



The floor plan is not to scale, measurements are indicative and in metres. Color or elements are not to position. Plans should not be relied on. Interested parties should make and rely on their own enquiries. All other information provided has been collected from reliable sources but cannot be guaranteed for accuracy.

6 Riverside Crescent, Marrickville

