

STONE



177-179 Lawson Street Redfern, NSW

3 

1 

2 

### Modern terrace in highly sought after Inner city pocket

Having undergone a recent renovation, this modern terrace is ideally positioned in a highly sought after Inner city pocket. Only a moments away from Redfern station, RPA, Australian Tech Park and Sydney Uni. The home is ideal for the working professional or family seeking convenience.

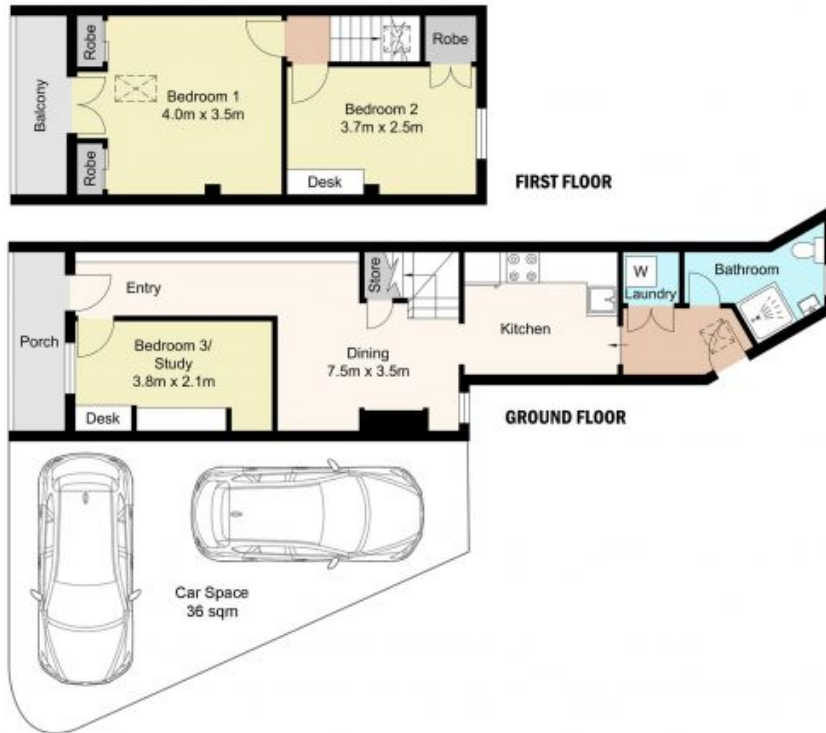
**Price:** Deposit Taken

**Available Date:** 19/06/2023



**Irma Rinaudo**

0426 240 502



Dimensions are approximate. All information contained is gathered from sources we believe to be reliable. However we cannot guarantee its accuracy and interested persons should rely on their own enquiries.

**177-179 LAWSON STREET, REDFERN**

