

12A Woodward Street Ermington, NSW

5 

4 

2 

### Luxury At Its Best!

This luxury brick home is situated in a fantastic location with easy access to transport, Ermington shops and schools. The property seamlessly combines large bedrooms with high ceilings, slick designer bathrooms and bright entertaining areas with a generous covered outside entertaining area and large landscaped yard, with separate living areas.

If it is size you're after then don't miss this stunning residence.

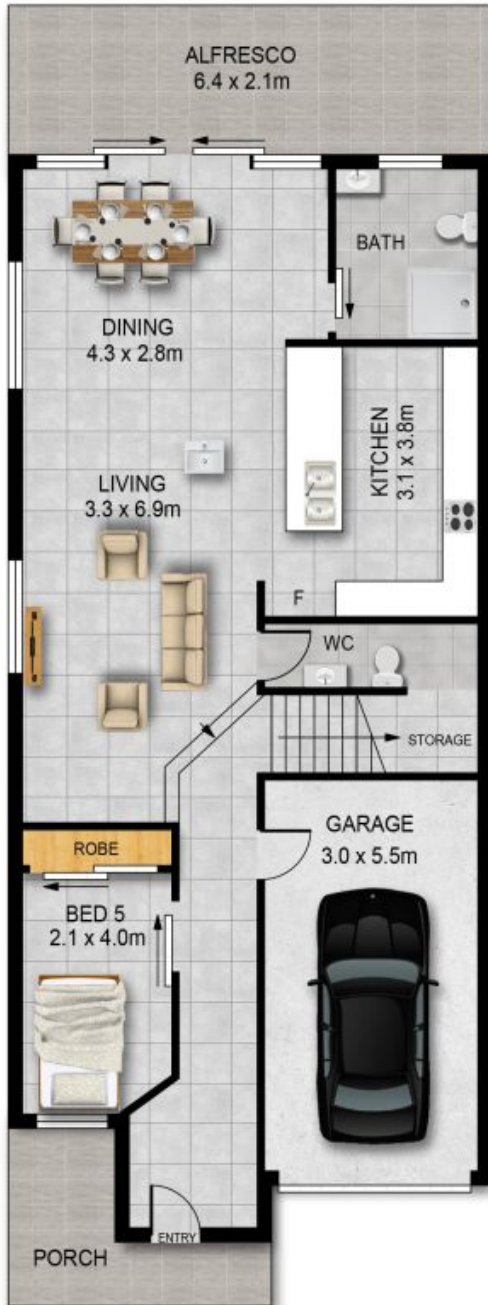
Set over 2 stories and with views as far as the eye can see, this is going to be hard to beat.

Price:

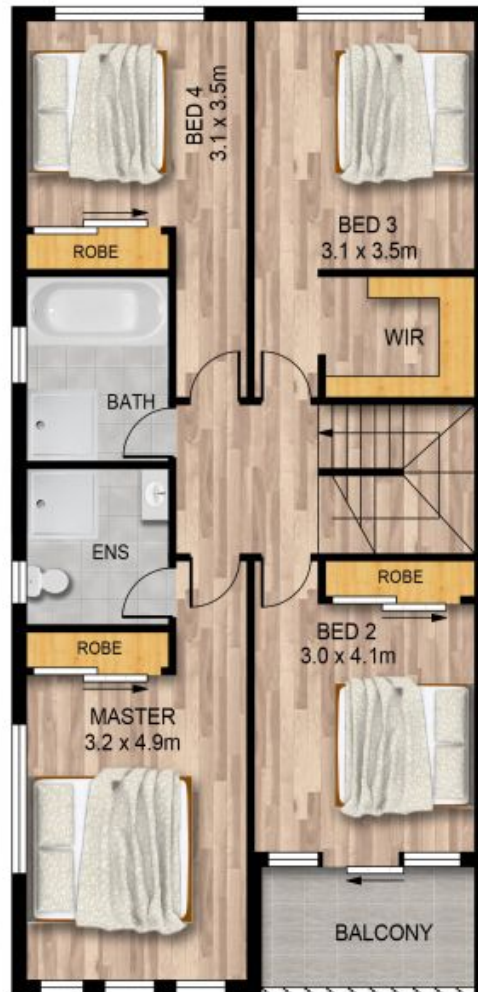
Offers Invited!

**Stone Real Estate**

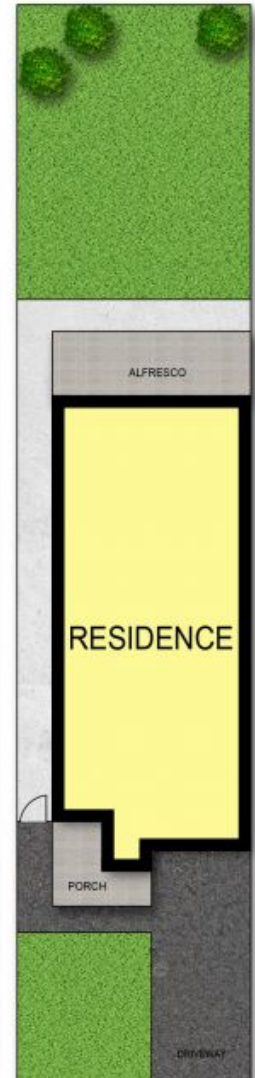
02 9898 0400  
**Ermington**



GROUND FLOOR



FIRST FLOOR



SITE PLAN

## 12A WOODWARD STREET, ERMINGTON

**DISCLAIMER:**

PLANS SHOWN ARE FOR MARKETING PURPOSES ONLY, ALL DIMENSIONS ARE APPROXIMATE AND NOT TO SCALE. THEY ARE SUBJECT TO ERRORS AND INACCURACIES AND NO LIABILITY WILL BE ACCEPTED. INTERESTED PARTIES SHOULD MAKE THEIR OWN INQUIRIES.