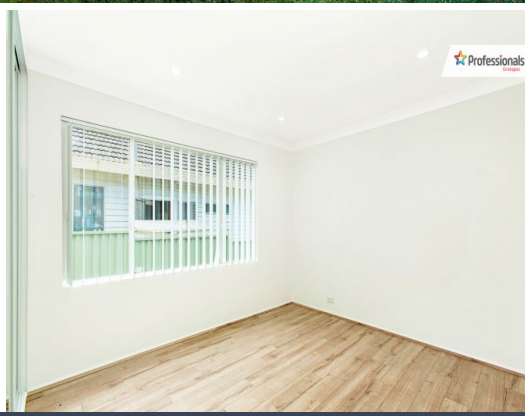


STONE

Professionals
Ermington



528 John Street Rydalmere, NSW

6 2 2

Water Front Property!

Here is your chance to purchase an affordable amazing water front property in the heart of Sydney, with direct access to the park and water's edge. Enjoying a peaceful position in a sought-after prestigious area of Rydalmere, these impeccable homes features generous proportions, stylish living areas, superior inclusions and all of this just meters from the water's edge. The unique property has a huge 3 bedroom fully renovated family home plus a near new 3 bedroom brick Vanier separate dwelling. This truly is one of a kind!

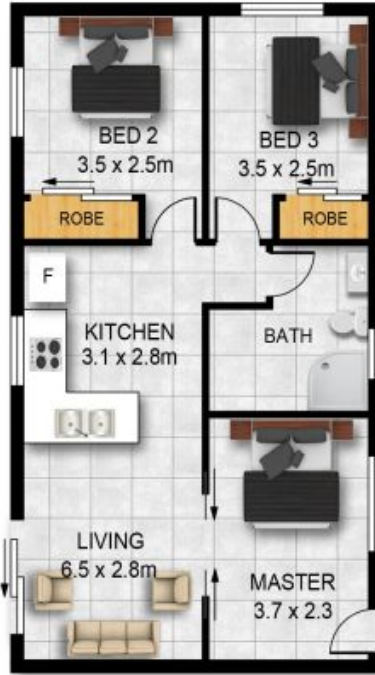
Price: FINAL CALL AUCTION THIS SATURDAY @ 10:30AM!

Stone Real Estate

02 9898 0400
Ermington



MAIN RESIDENCE



GRANNY FLAT



SITE PLAN

528 JOHN STREET, RYDALMERE

DISCLAIMER:

PLANS SHOWN ARE FOR MARKETING PURPOSES ONLY, ALL DIMENSIONS ARE APPROXIMATE AND NOT TO SCALE. THEY ARE SUBJECT TO ERRORS AND INACCURACIES AND NO LIABILITY WILL BE ACCEPTED. INTERESTED PARTIES SHOULD MAKE THEIR OWN INQUIRIES.