

6/9 Elonera Street Rydalmere, NSW

4  2  2 

"Full Brick Family Home"

Light, bright and well maintained throughout, this private townhouse presents a great opportunity for first home buyers, downsizers and investors alike.

Price:

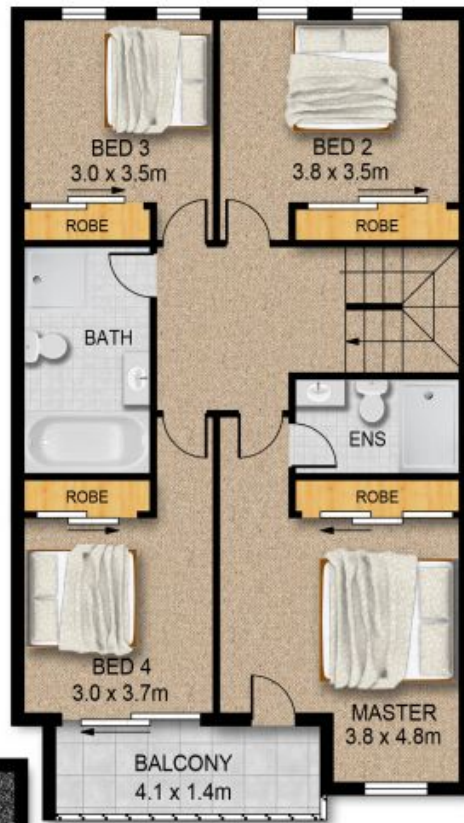
OPEN HOME CANCELLED!

Stone Real Estate

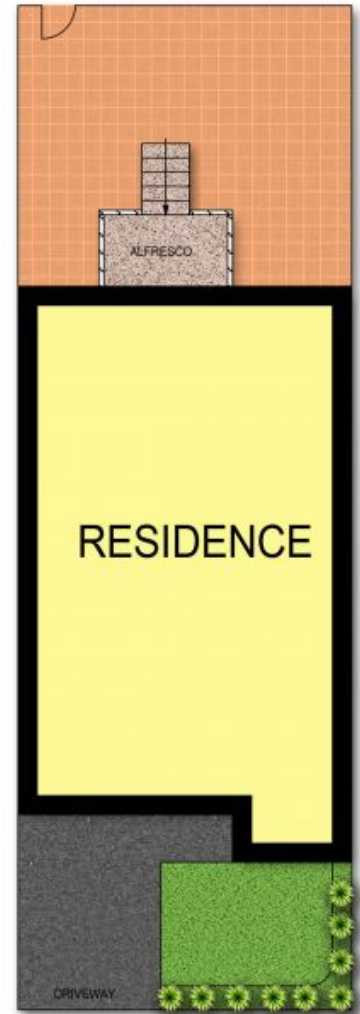
02 9898 0400
Ermington



GROUND FLOOR



FIRST FLOOR



SITE PLAN

6/9 ELONERA STREET, RYDALMERE

DISCLAIMER:

PLANS SHOWN ARE FOR MARKETING PURPOSES ONLY, ALL DIMENSIONS ARE APPROXIMATE AND NOT TO SCALE. THEY ARE SUBJECT TO ERRORS AND INACCURACIES AND NO LIABILITY WILL BE ACCEPTED. INTERESTED PARTIES SHOULD MAKE THEIR OWN INQUIRIES.