



31A Sylvia Street Rydalmere, NSW

5 

4 

1 

Rydalmere's Riverside Retreat

This brand-new double brick home is located on the Riverside of Rydalmere and is now ready for a new family to call it home.

Positioned in one of the suburb's most attractive streets, 31A Sylvia Street is a rare chance to secure a high end home in a family-oriented community with outstanding access to all amenities.

Property features:

- Five generous size bedrooms
- Double Master bedroom floor plan with ensuite and WIR rooms on both levels
- Huge high-end kitchen with butler's pantry
- Oversized combined living and entertaining area
- Conveniently close to the ferry wharf and walking tracks
- 4 Stunning bathrooms
- Video intercom upstairs & downstairs
- Garage with internal access

So, avoid disappointment and don't miss this opportunity- inspect today.

Price:

OFFERS INVITED



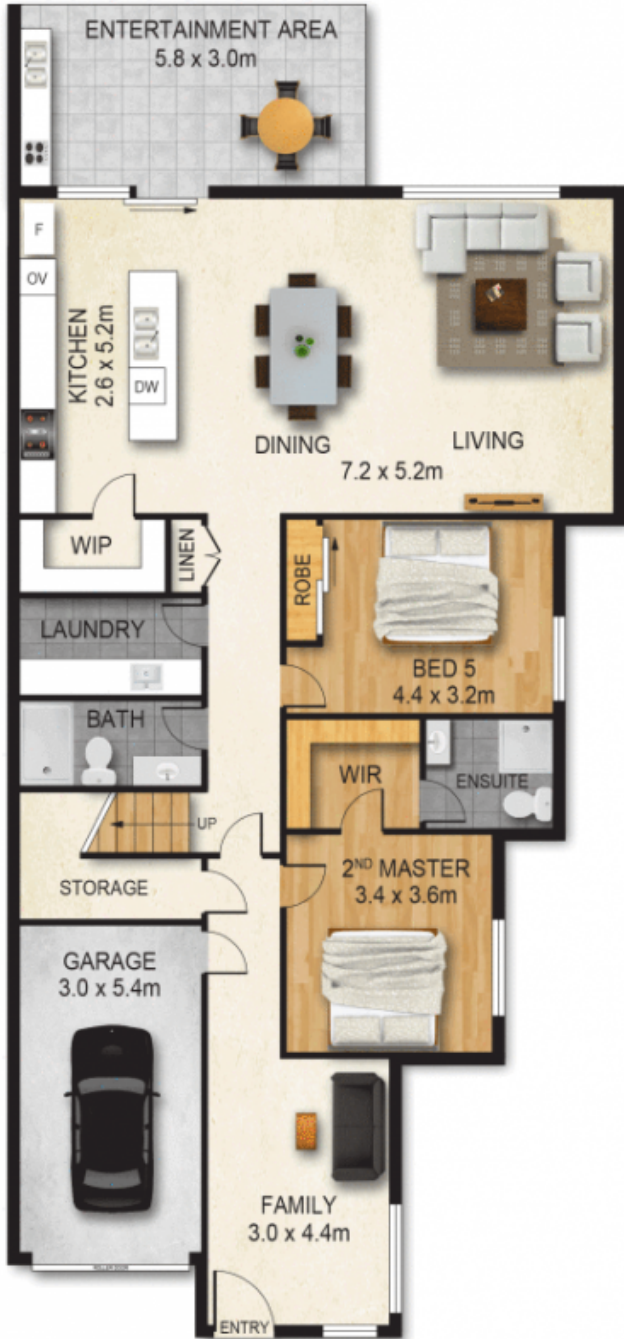
Charlie Wu

0491 781 656



Stephen Breene

0413 546 713



GROUND FLOOR



FIRST FLOOR



SITE PLAN

31A SYLVIA STREET, RYDALMERE

DISCLAIMER:

PLANS SHOWN ARE FOR MARKETING PURPOSES ONLY. ALL DIMENSIONS ARE APPROXIMATE AND NOT TO SCALE. THEY ARE SUBJECT TO ERRORS AND INACCURACIES AND NO LIABILITY WILL BE ACCEPTED. INTERESTED PARTIES SHOULD MAKE THEIR OWN INQUIRIES.