



HG15/81-86 Courallie Avenue Homebush West, NSW 2 2 1

### Sunny courtyard hideaway in Centenary Park

Offering low-rise comfort in a location prized for its proximity, this modern abode of the 'Keira' Centenary Park Apartments building embodies easy-care living. An oversized garden courtyard, low-upkeep interiors and the advantage of a dedicated home office make it an ideal turnkey option for young professionals, downsizers or investors alike, with the added benefit of exclusive complex facilities.

**Price:** Contact Agent  
**Council Rates:** \$446.00 p/q  
**Water Rates:** \$172.80 p/q  
**Strata Rates:** \$845.20 p/q



**Jeff Jianfu Luo**

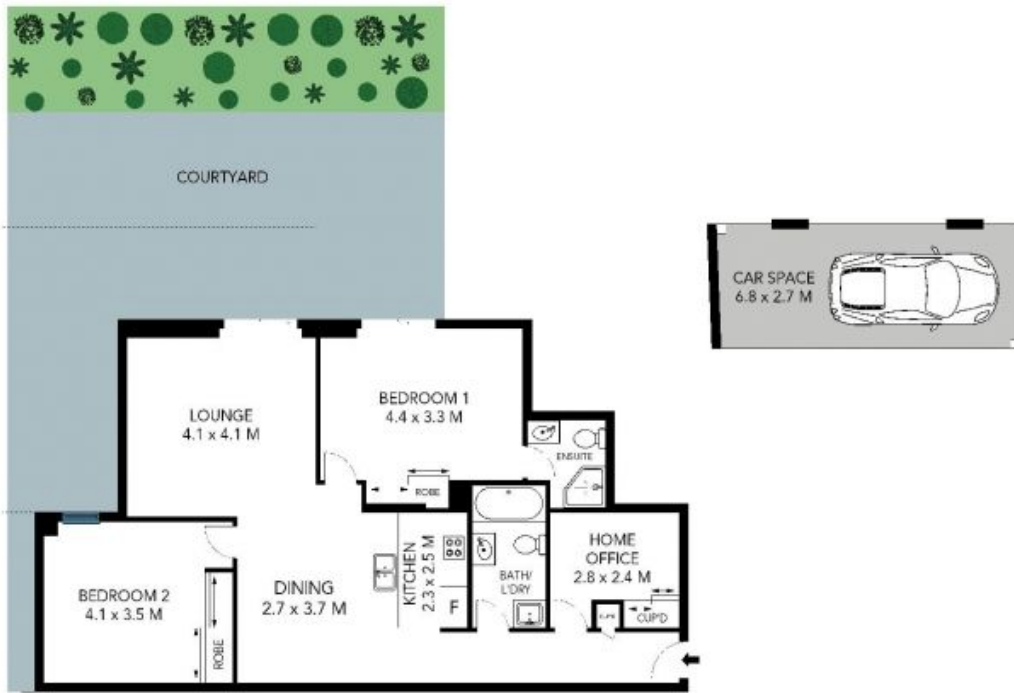
0425 286 668



**Wenjie Luo**

0433 971 007

HG15/81-86 Courallie Avenue,  
Homebush West



The site plan and floor plan are not to scale; measurements are indicative and in metres. Bushes and trees are placed for illustration purposes. Plans should not be relied on. Interested parties should make and rely on their own enquiries. All other information provided has been collected from reliable sources but cannot be guaranteed for accuracy.