



36 Lophostemon Drive North Boambee Valley, NSW



Modern & Stylish Family Home

This beautifully designed family home is just 18 months old and offers contemporary living with comfort, style and an abundance of storage. The main bedroom features a stunning ensuite and a spacious custom built walk-in robe.

The light-filled, open-plan living areas are complemented by 2550 ceiling heights and reverse-cycle air conditioning which seamlessly extend to a covered alfresco area, where you can enjoy breathtaking views of the hills. The well-appointed kitchen boasts premium SMEG appliances, including a 70cm induction cooktop, built-in oven, combo oven/microwave, and dishwasher, all set against elegant stone benchtops and a generous walk-in pantry complimented by under bench drawer units.

Price: \$995,000-\$1,045,000

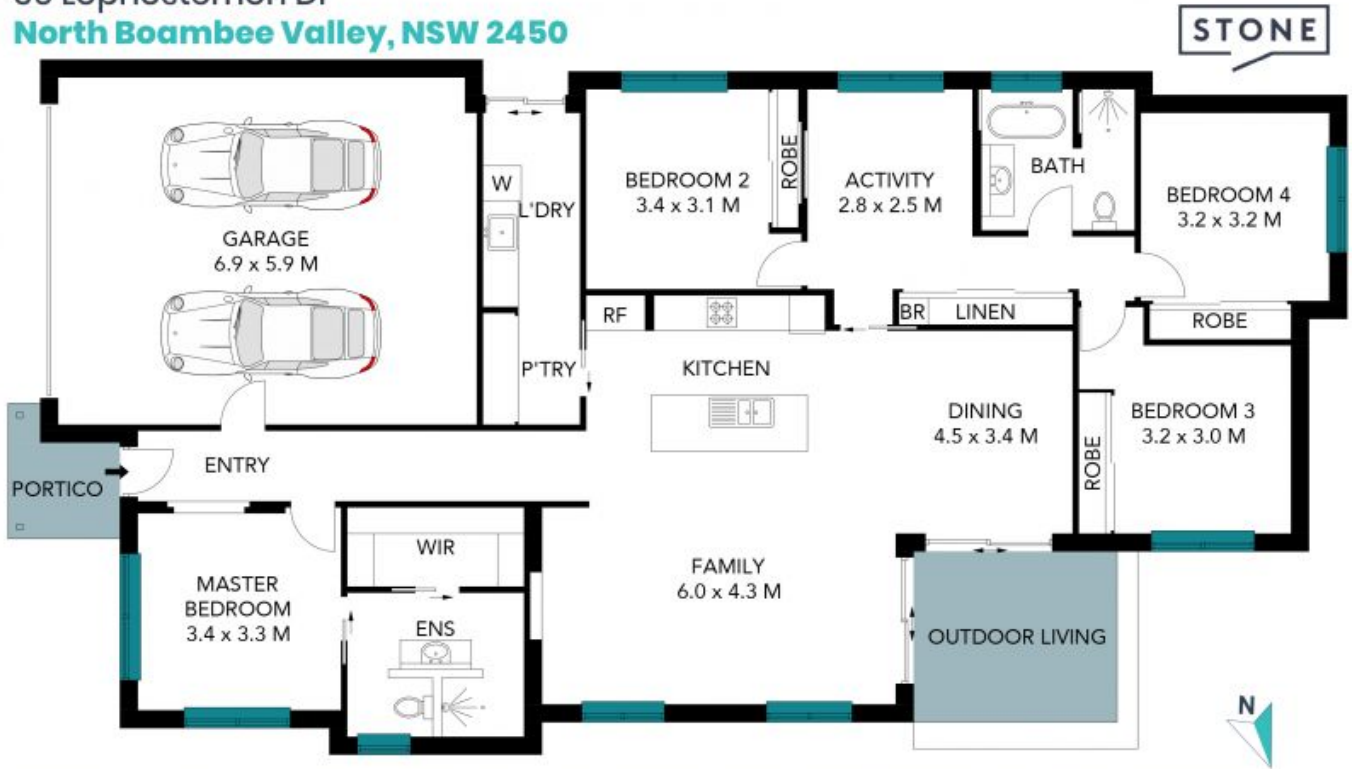
Council Rates: \$950.00 p/q



Luke Wenban

0418 165 979

36 Lophostemon Dr
North Boambee Valley, NSW 2450



The site plan and floor plan are not to scale; measurements are indicative and in metres. Bushes and trees are placed for illustration purposes. Plans should not be relied on. Interested parties should make and rely on their own enquiries. All other information provided has been collected from reliable sources but cannot be guaranteed for accuracy.