



95 Nepean Street Douglas Park, NSW 4 2 4

Give me a home among the gum trees

Discover the perfect balance between rural tranquillity and modern convenience with this 13.195-acre property in Douglas Park. Just minutes from the town centre, this expansive estate offers breathtaking views and abundant usable space, making it an ideal setting for those seeking privacy, lifestyle, and convenience.

Price: \$2,020,000



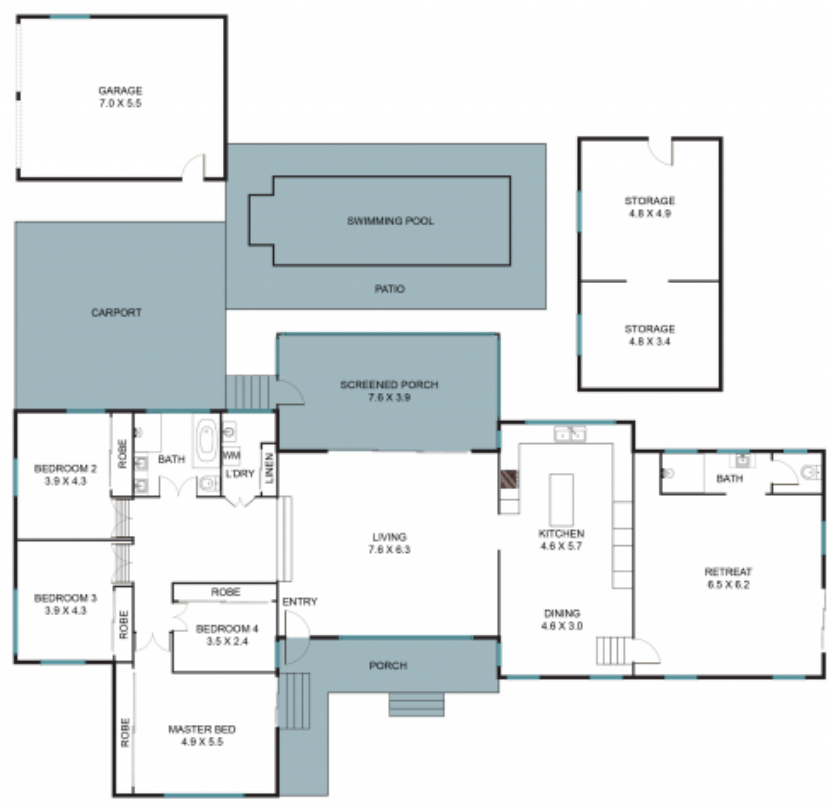
Bennett Parkinson

0420 213 456



Cameron Mitchell

0439 185 740



95 Nepean St, Douglas Park NSW 2569



The floor plan is not to scale, measurements are in metres. Exterior elements are not in position.
Plans should not be relied on. Interested parties should make and rely on their own enquiries.
All other information provided has been collected from reliable sources but cannot be guaranteed for accuracy.