



7/2 Forsyth Street Glebe, NSW



Light, convenience and spectacular views

With a quiet elevated position and prized north easterly aspect, this stylish apartment is one of the select few in the 'Arden' to have stunning views. A central locale, close to Glebe eateries, Fish Markets, Sydney University, light rail and buses.

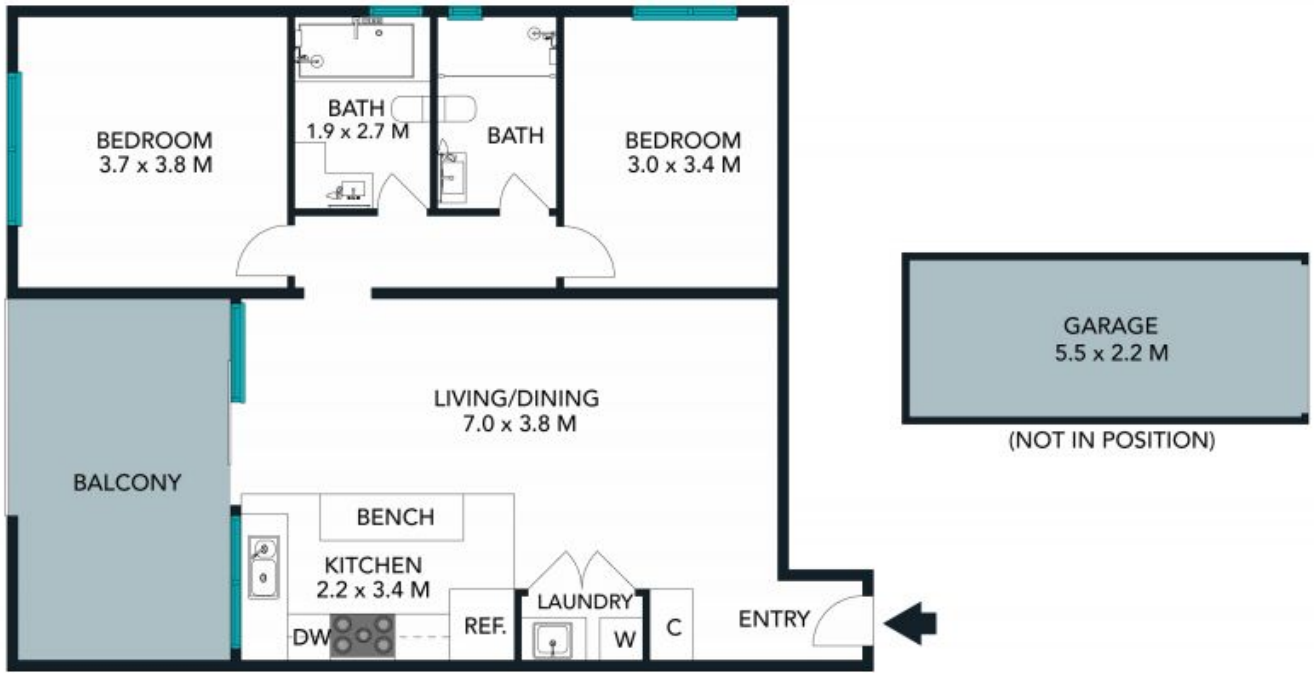
Price:

Contact Agent



Joseph Tropiano

0401 002 211



TOTAL SQM ON TITLE : 107 SQM

The floor plan is not to scale; measurements are indicative and in metres. Exterior elements are not in position. Plans should not be relied on. Interested parties should make and rely on their own enquiries.



Unit 7/2 Forsyth Street, Glebe
 stonerealestate.com.au

Produced by DIAKRIT



The floor plan is not to scale; measurements are indicative and in metres. All features included in this 3D plan are for inspiration purposes only. This is not an exact replica of the property or the position of exterior elements. Plans should not be relied on. Interested parties should make and rely on their own enquiries.

Unit 7/2 Forsyth Street, Glebe
stonerealestate.com.au

Produced by DIAKRIT