

9/2a Forsyth Street Glebe, NSW

2 1 1

### 'Avon Towers' apartment with sweeping city views

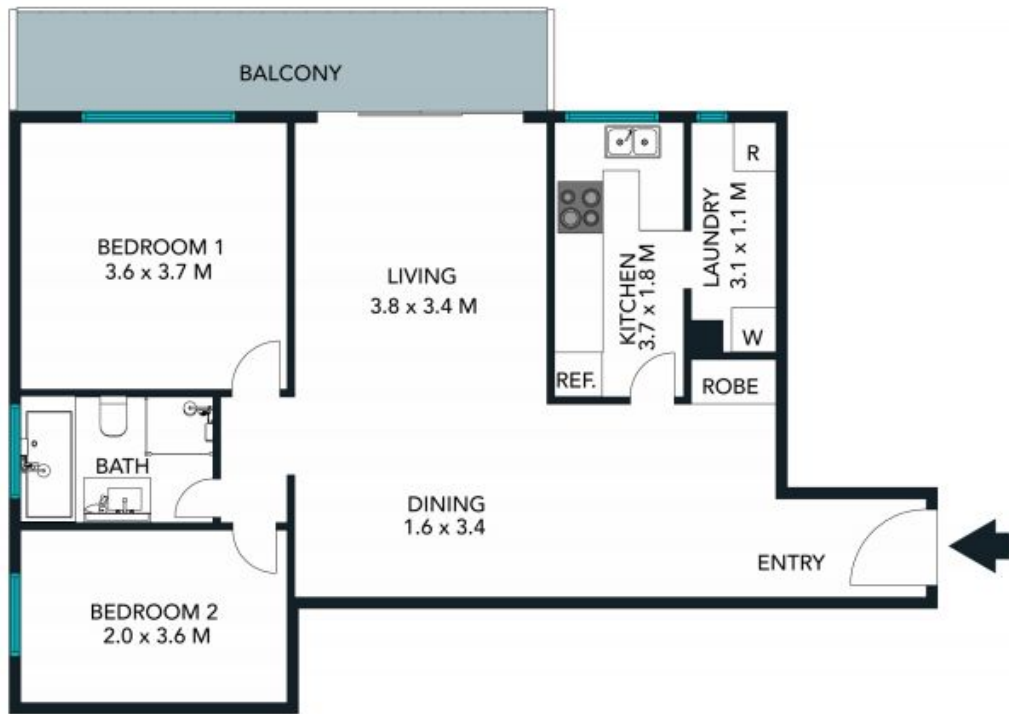
Enjoy spectacular harbour district views to the city skyline, including the Anzac and Sydney Harbour Bridges, as the owner of this all-original 1st floor security apartment. Located in one of Glebe's landmark buildings just moments from the foreshores of Blackwattle Bay, it offers exceptional scope to personalise and potentially add value in a highly desirable village setting.

Price: Contact Agent



**Joseph Tropiano**

0401 002 211



The floor plan is not to scale; measurements are indicative and in metres. Exterior elements are not in position. Plans should not be relied on. Interested parties should make and rely on their own enquiries.

9/2a Forsyth Street, Glebe  
stonerealestate.com.au

Produced by DIAKRIT



The floor plan is not to scale; measurements are indicative and in metres. All features included in this 3D plan are for inspiration purposes only. This is not an exact replica of the property or the position of exterior elements. Plans should not be relied on. Interested parties should make and rely on their own enquiries.

9/2a Forsyth Street, Glebe  
stonerealestate.com.au

Produced by DIAKRIT