



918G/780 Bourke Street Redfern, NSW



### Full city views from a smart designer living space

Fresh, bright and displaying a smart modern style, this 'Moore Park Gardens' security apartment captures the essence of city living with designer finishes, light filled interiors and an elevated position with sweeping views to the skyline. This is the perfect pad for city professionals or a great investment option as it is designed for low maintenance style and offers easy access to the CBD with all of the area's attractions including transport, cafes, parks and restaurants just a few steps from the front door.

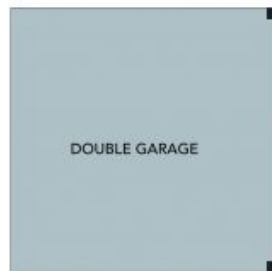
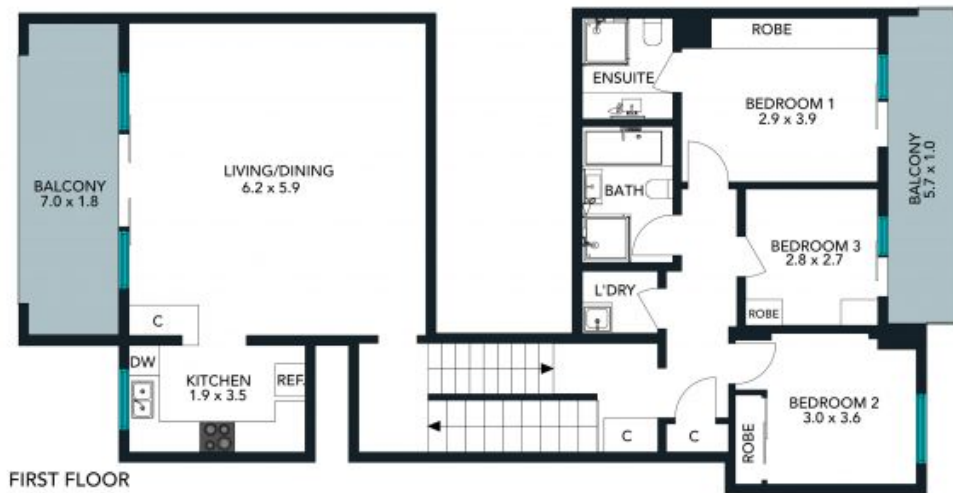
Price:

Contact Agent



**Joseph Tropiano**

0401 002 211



The floor plan is not to scale, measurements are indicative and in metres. Exterior elements are not in position. Plans should not be relied on. Interested parties should make and rely on their own enquiries. All other information provided has been collected from reliable sources but cannot be guaranteed for accuracy.



918G/780 Bourke Street, Redfern





FIRST FLOOR



GROUND FLOOR

The floor plan is not to scale, measurements are indicative and in metres. All features included in this 3D plan are for inspiration purposes only. This is not an exact replica of the property or the position of exterior elements. Plans should not be relied on. Interested parties should make and rely on their own enquiries.



918G/780 Bourke Street, Redfern

