



8 Smithers Street Chippendale, NSW

2

1

### Smart urban living in a classic Chippendale terrace

Offering a quiet and super-convenient lifestyle, this attractive tri-level terrace is perfectly located walking distance to all of the action with Central Park, Broadway shopping, universities and the CBD all just a stroll from the front door. Its well-maintained throughout with a tempting combination of comfort for today and exciting scope to introduce your own flair in the future. Talk about value for money, if you're seeking an affordable property in this great inner urban neighbourhood, it's unlikely you'll find a better one than this.

**Price:** Contact Agent  
**Council Rates:** \$381.90 p/q  
**Water Rates:** \$166.86 p/q



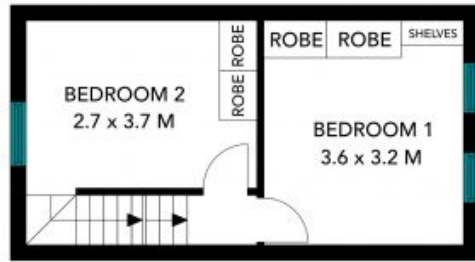
**Joseph Tropiano**

0401 002 211

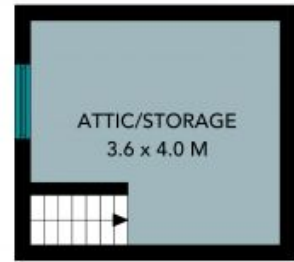


**Irma Rinaudo**

0426 240 502



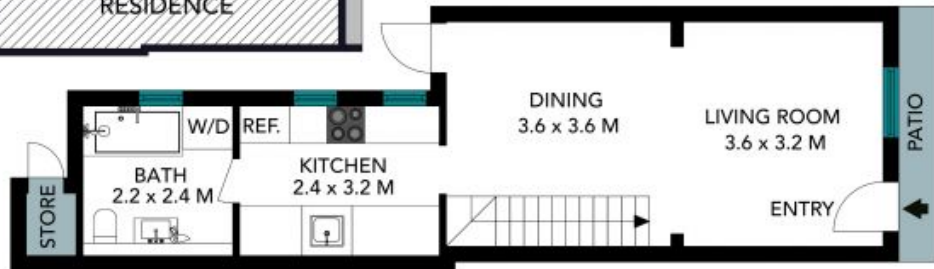
FIRST FLOOR



ATTIC



SITE PLAN



GROUND FLOOR



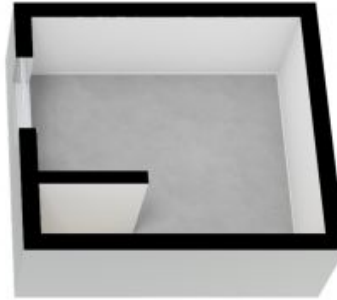
The site plan and floor plan are not to scale, measurements are indicative and in metres. Bushes and trees are placed for illustration purposes. Plans should not be relied on. Interested parties should make and rely on their own enquiries. All other information provided has been collected from reliable sources but cannot be guaranteed for accuracy.

8 Smithers Street, Chippendale





FIRST FLOOR



ATTIC



GROUND FLOOR

The floor plan is not to scale, measurements are indicative and in metres. All features included in this 3D plan are for inspiration purposes only. This is not an exact replica of the property or the position of exterior elements. Plans should not be relied on. Interested parties should make and rely on their own enquiries.



8 Smithers Street, Chippendale

