



2 Faye Avenue Earlowd, NSW



Large-sized full brick residence with panoramic views

From its exclusive elevated position in a boutique cul-de-sac, this smartly appointed full brick residence showcases a spacious and private lifestyle surrounded by panoramic views over the district to the city. It features a generous two-level floorplan with multiple living spaces, some fresh modern updates and private outdoor areas that all go together to provide a great home for entertaining. The location is also excellent and offers easy walking access to the Cooks River parklands and cycleways, as well as Earlowd's shopping, schools and bus transport.

Price: Contact Agent

Council Rates: \$440.00 p/q

Water Rates: \$189.60 p/q



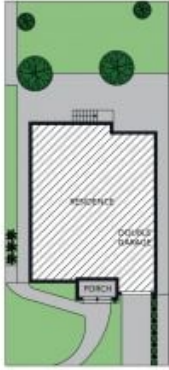
Joseph Tropiano

0401 002 211

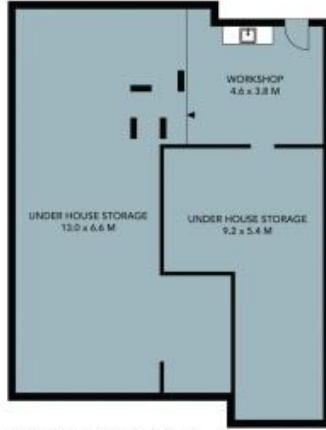


Irma Rinaudo

0426 240 502



SITE PLAN



BASEMENT LEVEL



GROUND LEVEL



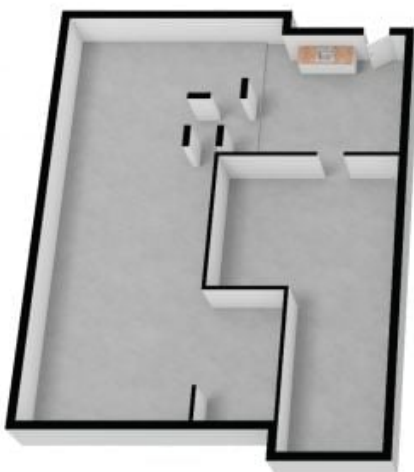
UPPER LEVEL



The site plan and floor plan are not to scale, measurements are indicative and in meters. Boxes and lines are placed for illustration purposes. Plans should not be relied on. Interested parties should make and rely on their own enquiries. All other information provided has been collected from reliable sources but cannot be guaranteed for accuracy.

2 Faye Avenue, Earlwood

STONE



BASEMENT LEVEL



GROUND LEVEL



UPPER LEVEL



The floor plan is not to scale, measurements are indicative and in metres. All features included in this 3D plan are for inspiration purposes only. This is not an exact replica of the property or the position of exterior elements. Plans should not be relied on. Interested parties should make and rely on their own enquiries.

2 Faye Avenue, Earlwood

