



36 Cavendish Street Stanmore, NSW

4

2

1

'Florenza' - A landmark family home of character and distinction

Here lies an exceptional opportunity to acquire a unique slice of history with one of Stanmore's most significant properties. 'Florenza', a grand Victorian residence, dates back to 1887 and was originally the home of Richard Seymour, Sydney's Inspector for Nuisances, and has been beautifully preserved, sympathetically upgraded and extended to create the feeling of a tranquil inner-city oasis. Rarely does a prospect arise that presents a lifestyle of such character, space and absolute privacy within walking distance to Newington College, Stanmore railway station and Enmore Road.

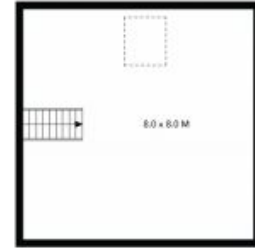
Price: Contact Agent
Council Rates: \$474.00 p/q



Joseph Tropiano
0401 002 211



Irma Rinaudo
0426 240 502



Ground Floor



First Floor



The site plan and floor plan are not to scale; measurements are indicative and in metres. Bushes and trees are placed for illustration purposes. Plans should not be relied on. Interested parties should make and rely on their own enquiries. All other information provided has been collected from reliable sources but cannot be guaranteed for accuracy.

36 Cavendish Street
Stanmore



Ground Floor



First Floor



The floor plan is not to scale; measurements are indicative and in metres. All features included in this 3D plan are for inspiration purposes only. This is not an exact replica of the property or the position of exterior elements. Plans should not be relied on. Interested parties should make and rely on their own enquiries.