



37 London Street Enmore, NSW

3

1

Charming Victorian terrace in prized pocket

A timeless character facade provides the ideal introduction to this fantastic Victorian terrace. It promises a superb standard of modern living and entertaining nestled in a premier pocket. The property is a stroll to Enmore Road and King Street's vibrant caf? and dining precincts with craft breweries, small bars and hotspot eateries at your fingertips.

Price: \$1,500,000



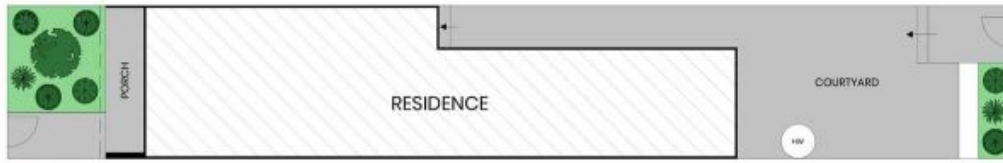
Joseph Tropiano

0401 002 211

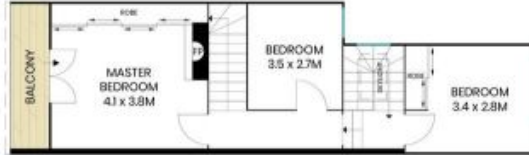


Irma Rinaudo

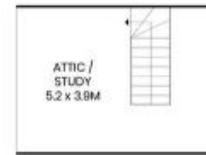
0426 240 502



Site Plan



First Floor



Second Floor



Ground Floor



The site plan and floor plan are not to scale; measurements are indicative and in metres. Bushes and trees are placed for illustration purposes. Plans should not be relied on. Interested parties should make and rely on their own enquiries. All other information provided has been collected from reliable sources but cannot be guaranteed for accuracy.

37 London Street
Enmore



First Floor



Second Floor



Ground Floor



The floor plan is not to scale; measurements are indicative and in metres. All features included in this 3D plan are for inspiration purposes only. This is not an exact replica of the property or the position of exterior elements. Plans should not be relied on. Interested parties should make and rely on their own enquiries.