



258 Addison Road Petersham, NSW



### Freestanding family retreat in a superb location

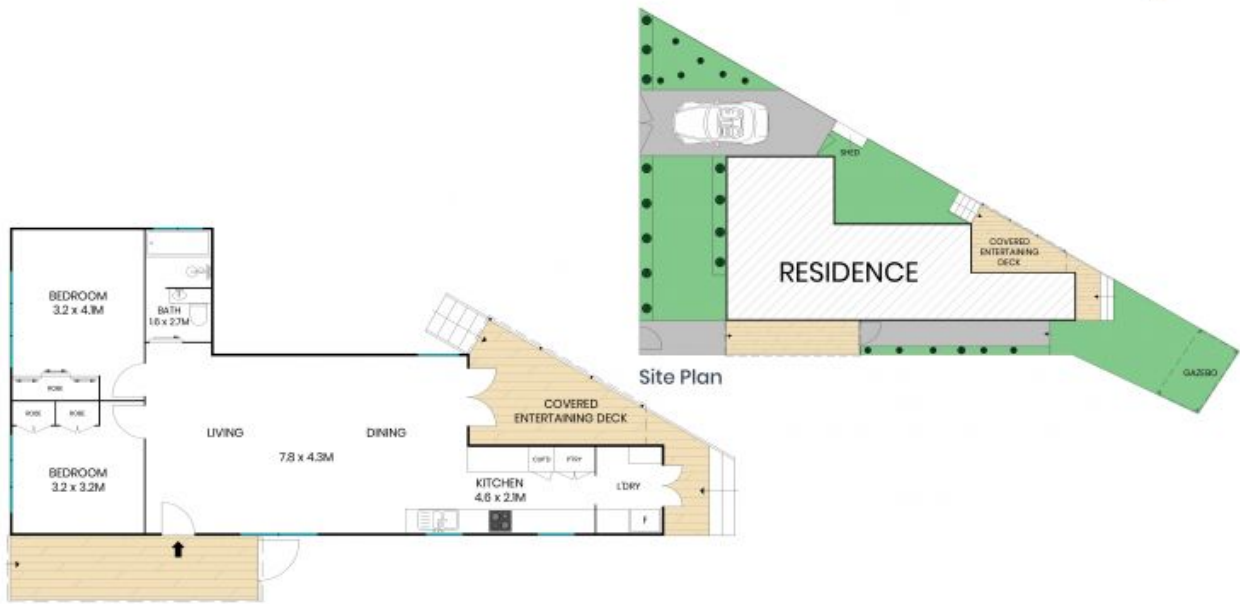
Nestled behind a charming garden entrance, this freestanding residence delivers the ideal single level layout, perfect for low maintenance family living and entertaining. Filled with character and ready for you to move straight in, the home has been enhanced with stylish modern updates and bespoke accents. It's just metres from the Marrickville Markets, and footsteps from parks and transport.

**Price:** \$1,600,000  
**Council Rates:** \$358.00 p/q  
**Water Rates:** \$177.03 p/q



**Joseph Tropiano**

0401 002 211



Internal Living: 72sqm  
External Living: 160sqm  
Total Living Area: 234sqm



The site plan and floor plan are not to scale; measurements are indicative and in metres. Bushes and trees are placed for illustration purposes. Plans should not be relied on. Interested parties should make and rely on their own enquiries. All other information provided has been collected from reliable sources but cannot be guaranteed for accuracy.

258 Addison Road  
Petersham



The floor plan is not to scale; measurements are indicative and in metres. All features included in this 3D plan are for inspiration purposes only. This is not an exact replica of the property or the position of exterior elements. Plans should not be relied on. Interested parties should make and rely on their own enquiries.