

12 Riverview Street Chiswick, NSW



### Double brick family home offers endless potential

Resting on a generous 632sqm corner block and boasting dual street frontage, this spacious family home showcases a captivating blend of vintage character and modern style, while offering superb potential for redevelopment (STCA). Its highly sought-after location provides easy access to waterside reserves, bus services and Chiswick Wharf, while only moments from local schools and village shops.

**Price:** Contact Agent

**Council Rates:** \$839.00 p/q

**Water Rates:** \$173.29 p/q



**Joseph Tropiano**

0401 002 211



**Irma Rinaudo**

0426 240 502

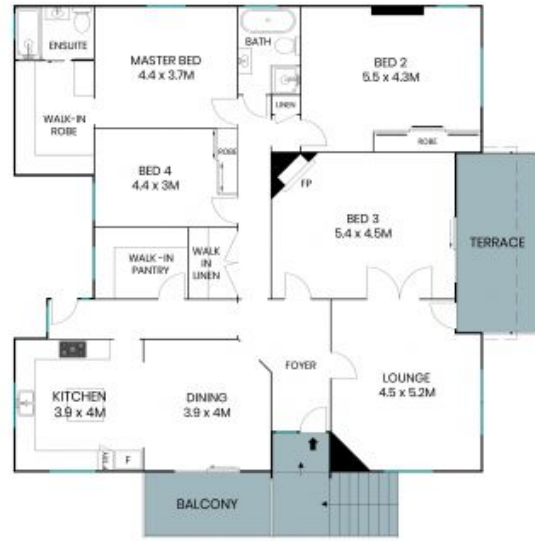
12 Riverview Street  
Chiswick



Site Plan



Lower Level



Entry Level



The site plan and floor plan are not to scale; measurements are indicative and in metres. Bushes and trees are placed for illustration purposes. Plans should not be relied on. Interested parties should make and rely on their own enquiries. All other information provided has been collected from reliable sources but cannot be guaranteed for accuracy.