






47 Mossman Parade Waterford, QLD

4

2

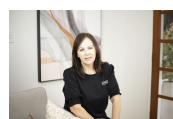
2

Super Spacious Family Home

An inspection of the home will have you instantly appreciate the spacious floor plan, modern design, and effortless flow between indoor and outdoor living. This house isn't just a home - it's a place that feels warm, inviting, and truly special.

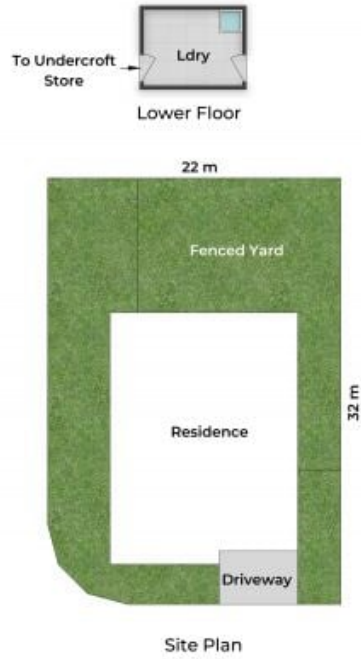
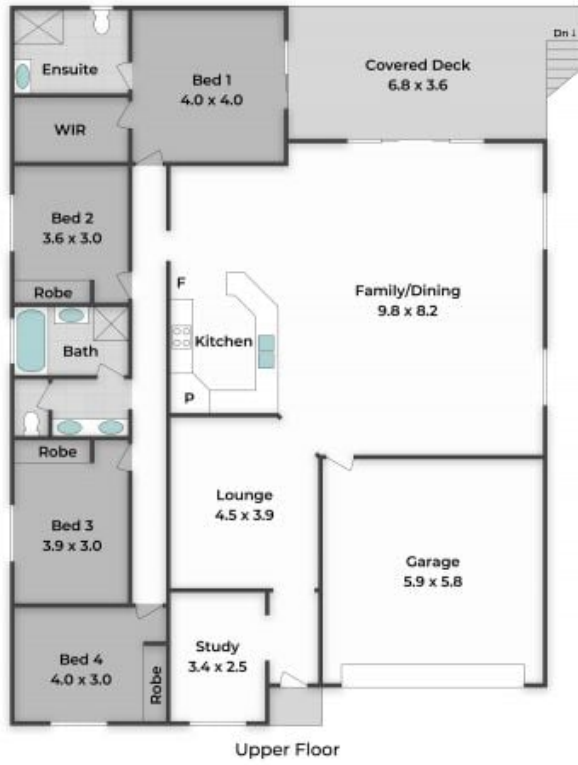
Price:

CONTACT AGENT



Leanne Gunn

0413 817 092



Approx. Floor Area | Internal 234 m² | External 26 m² | Total 260 m² | Lot 695 m²

Unless otherwise stated, all dimensions are in metres. Star marks indicate the upward direction. This plan and information contained within is for illustrative purposes only and not guaranteed to be exact. Interested parties should make their own enquiries.

