

1/728 Darling Street Rozelle, NSW

**** Price Reduced ****

- (2) Commercial Suites Separately or One line
- Exclusive Underground Parking

Stone Commercial are proud to Exclusively present on behalf of our landlords this immaculate and well presented commercial suite.



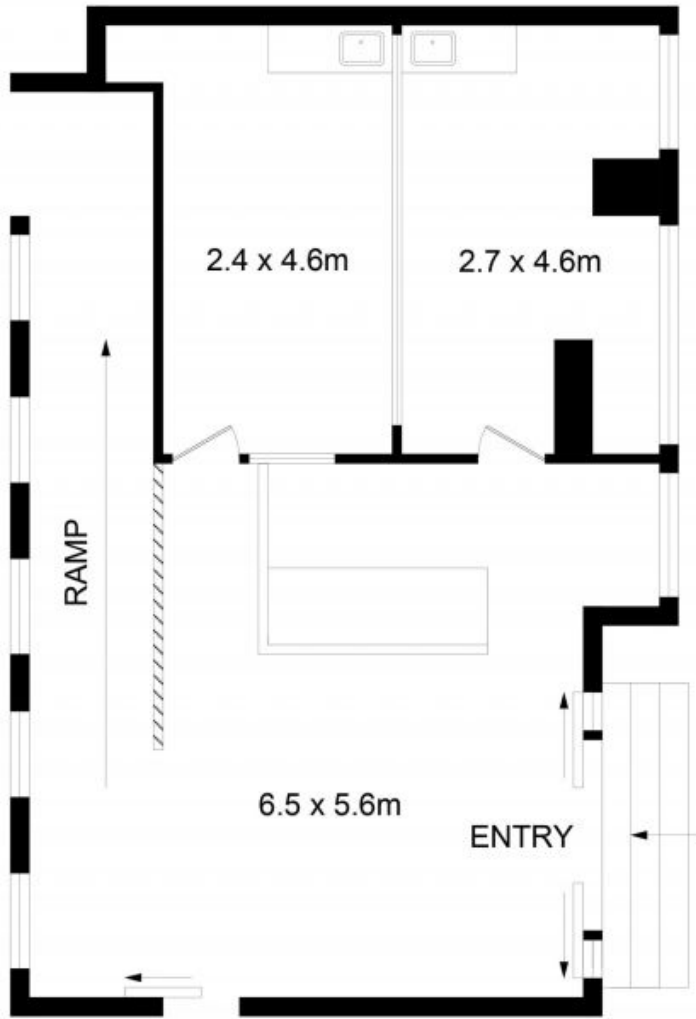
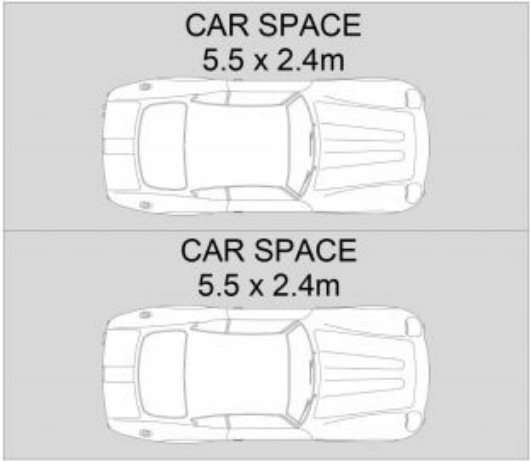
Paul Di Mauro

0431 099 976



John Bacic

0405 202 202



Lot 13/728 Darling Street, Rozelle

INTERNAL AREA :- 64 SQM

DISCLAIMER: No liability for the accuracy of details contained within our floor plans. All plans are drawn and also checked to the best of our ability, however information contained in our floor plans such as area calculations are approximate, and have not been surveyed or drawn to scale. Our floor plans are for representational purposes only and should be used as such. Do not attempt to refer to our floor plans for structural or detailed information.