



801/25 Campbell Street Parramatta, NSW



### Perfect blend of comfort and convenience

This stylish two-bedroom apartment is in the heart of Parramatta and boasts a lifestyle of absolute convenience. Perfectly positioned directly across from Westfield Parramatta and only a short stroll to Parramatta station, bus services, both Parramatta High School & Public School + Parramatta Square, which includes the vibrant dining district.

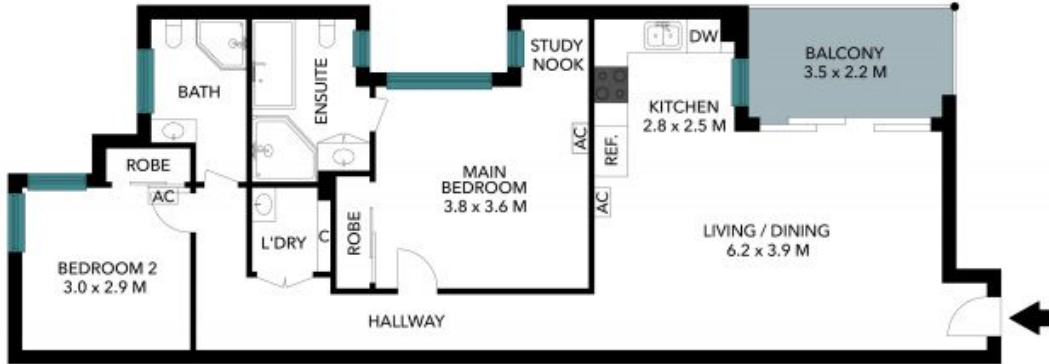
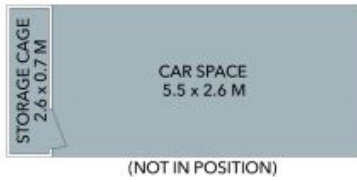
**Price:**

\$615,000 - \$670,000



**Natasha Chand**

0414 687 418



The floor plan is not to scale; measurements are indicative and in metres. Exterior elements are not in position. Plans should not be relied on. Interested parties should make and rely on their own enquiries. All other information provided has been collected from reliable sources but cannot be guaranteed for accuracy.

801/25 Campbell Street  
Parramatta



The floor plan is not to scale; measurements are indicative and in metres. All features included in this 3D plan are for inspiration purposes only. This is not an exact replica of the property or the position of exterior elements. Plans should not be relied on. Interested parties should make and rely on their own enquiries.