

109/11 Veno Street Heathcote, NSW 2 2 2

Modern, light-filled apartment in convenient location

Perfectly positioned near restaurants, cafes, IGA, and Heathcote station, this sun-drenched 2-bed, 2-bath apartment offers mod-cons and a desirable lifestyle. Boasting a spacious living/dining area with a serene leafy outlook, a designer kitchen with gas cooking, two car spaces, and a rooftop BBQ area with panoramic views, this apartment is designed for modern living.

Price: Contact agent
Council Rates: \$367.50 p/q
Water Rates: \$171.40 p/q
Strata Rates: \$1,191.05 p/q

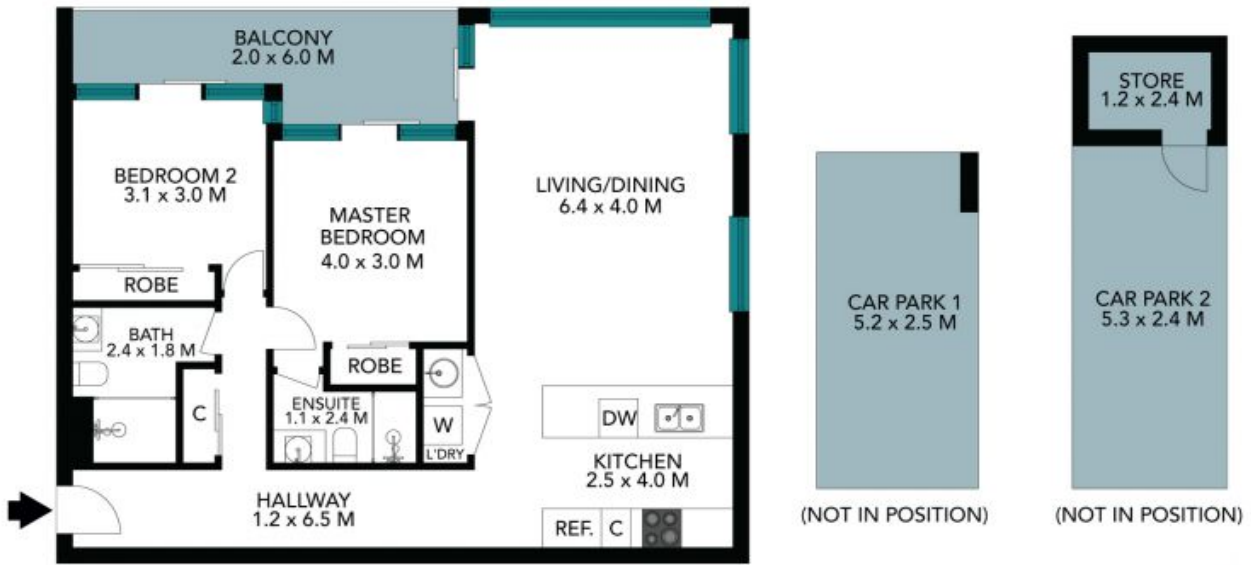


Gerard Foote
0433 421 333



Liam Pesa
0423 601 244

109/11 Veno Street
Heathcote



The floor plan is not to scale; measurements are indicative and in metres. Exterior elements are not in position. Plans should not be relied on. Interested parties should make and rely on their own enquiries. All other information provided has been collected from reliable sources but cannot be guaranteed for accuracy.

109/11 Veno Street
Heathcote



The floor plan is not to scale; measurements are indicative and in metres. All features included in this 3D plan are for inspiration purposes only. This is not an exact replica of the property or the position of exterior elements. Plans should not be relied on. Interested parties should make and rely on their own enquiries.