



12 Dowling Street Leumeah, NSW 4 2 1

Family home in prime location

Nestled in a peaceful pocket of Leumeah, this original yet well-maintained four-bedroom home is perfect for families, investors, or those looking to add their personal touch. Set on a 556.4m² block, the property offers comfortable living with plenty of space inside and out.

Price: Contact Agent

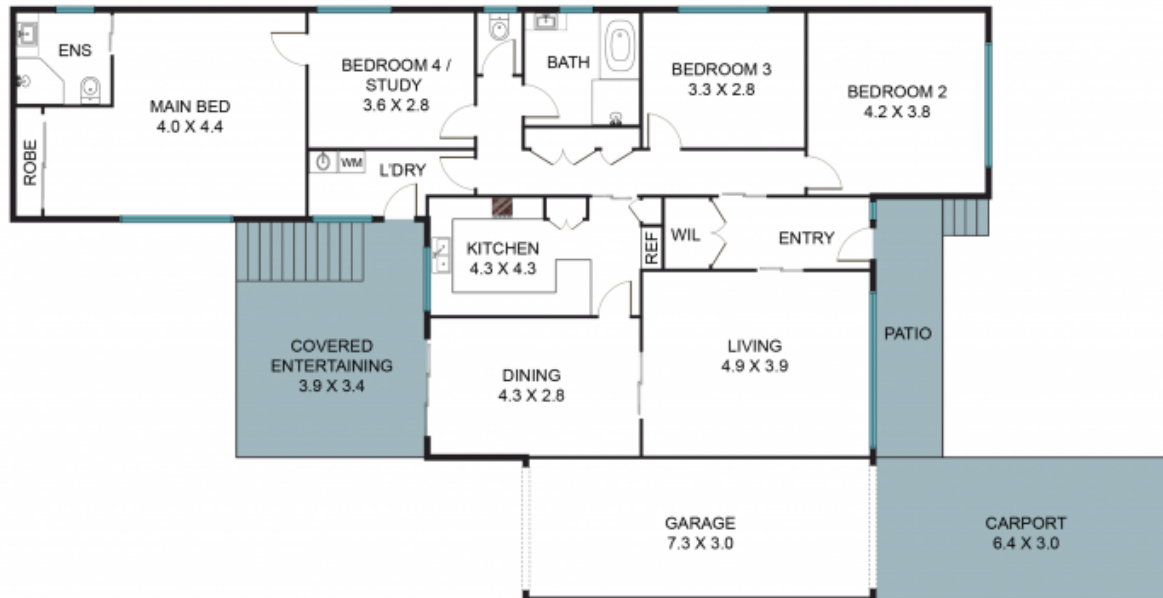


Gary Luke
0418 451 105



Kaitlin Hall
0404 529 516

STONE



12 Dowling St, Leumeah NSW 2560



The floor plan is not to scale, measurements are in metres. Exterior elements are not in position.
Plans should not be relied on. Interested parties should make and rely on their own enquiries.
All other information provided has been collected from reliable sources but cannot be guaranteed for accuracy.