

B207/22 Innesdale Road Wolli Creek, NSW



### Contemporary apartment with sun-drenched spaces in the heart of Wolli Creek

This sophisticated two-bedroom apartment offers the ideal blend of modern elegance and urban convenience, positioned in the sought-after suburb of Wolli Creek. Boasting sleek floorboards throughout and high-quality finishes, the residence exudes contemporary style while providing a functional layout for everyday living. Large windows bathe the home in natural light, creating a warm and inviting atmosphere throughout.

**Price:** Inspection Cancelled Under Contract  
**Council Rates:** \$403.00 p/q  
**Water Rates:** \$169.00 p/q

**Jacky (Weiqiu) Lian**

0452 501 314

**Sabrina (Xiaodan) Wang**

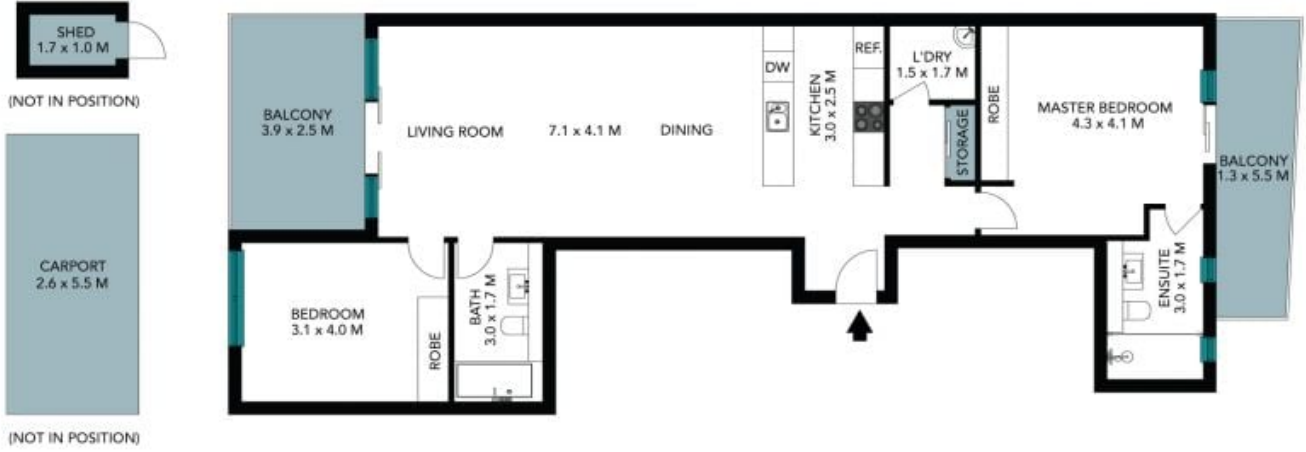
0410 701 687

**Wang**

B207/22 Innesdale Road  
Wolli Creek



The floor plan is not to scale, measurements are indicative and in metres. All features included in this 3D plan are for inspiration purposes only. This is not an exact replica of the property or the position of exterior elements. Plans should not be relied on. Interested parties should make and rely on their own enquiries.



The floor plan is not to scale, measurements are indicative and in metres. Exterior elements are not in position. Plans should not be relied on, interested parties should make and rely on their own enquiries. All other information provided has been collected from reliable sources but cannot be guaranteed for accuracy.