



55 Catherine Street Leichhardt, NSW



Charming terrace home in premier lifestyle setting

Positioned along one of Leichhardt's most sought-after streets, this gorgeous two storey terrace combines subtle period character with modern appointments, functionality and comfort to provide a beautiful retreat, close to an array of lifestyle amenities. It's ideally set within walking distance of Annandale Public School and Norton Street's wide selection of shops, coffee spots and restaurants.

Price: \$1,800,000
Council Rates: \$385.00 p/q
Water Rates: \$324.00 p/q



Joseph Tropiano

0401 002 211



First Level



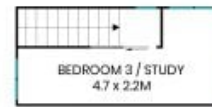
Site Plan



Entry Level



Lower Level



First Level



The site plan and floor plan are not to scale; measurements are indicative and in metres. Bushes and trees are placed for illustration purposes. Plans should not be relied on. Interested parties should make and rely on their own enquiries. All other information provided has been collected from reliable sources but cannot be guaranteed for accuracy.

55 Catherine Street
Leichhardt



First Level



Entry Level



Lower Level



First Level



The floor plan is not to scale; measurements are indicative and in metres. All features included in this 3D plan are for inspiration purposes only. This is not an exact replica of the property or the position of exterior elements. Plans should not be relied on. Interested parties should make and rely on their own enquiries.