



25a Congewai Street Kearsley, NSW

2 1 1

### Brand New Granny Flat, with yard space!

This granny flat is cute and brand new! With plenty of yard space, being fully fenced and includes rear lane access, it will not last long! Located under 10 minutes from Cessnock CBD, 15 minutes to Kurri Kurri CBD, its super handy!

**Price:** \$440 per week

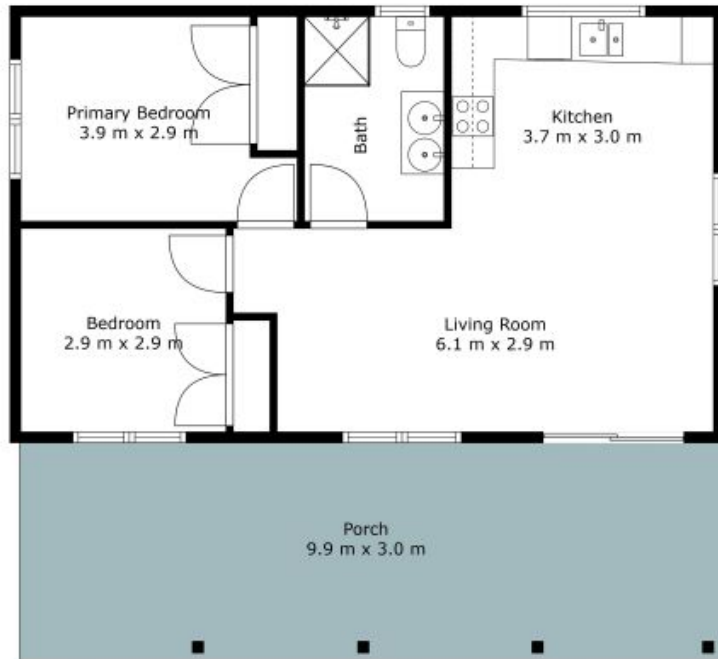
**Available Date:** 05/03/2025



**Kerrie Reilly**

0423 618 175

25a Congewai Street  
Kearsley



The site plan and floor plan are not to scale; measurements are indicative and in metres. Bushes and trees are placed for illustration purposes. Plans should not be relied on, interested parties should make and rely on their own enquiries. All other information provided has been collected from reliable sources but cannot be guaranteed for accuracy.