



6/1684 Channel Highway Margate, TAS



Ideal for First Home Buyers, Downsizers & Investors!

Nestled in the heart of Margate, this immaculate free-standing unit offers a perfect blend of comfort, style, and convenience.

Price: Offers over \$515,000
Council Rates: \$1,003.00/year (approx)
Strata Rates: \$930.00/year (approx)



Louise Wallace
0429 671 462



Louise Wallace
0429 671 462

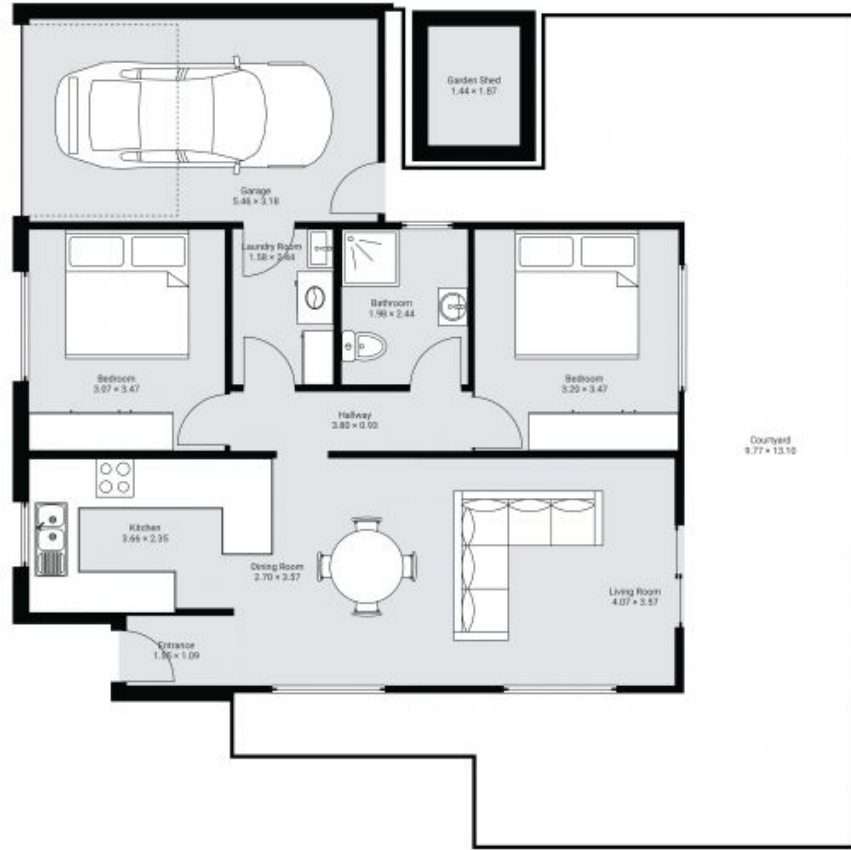
Unit 6/1684
Channel Highway,
Margate, TAS

CREATED ON
2025-03-05

DETAILS
Total area: 143.76 m²
Living area: 70.03 m²

▼ Ground Floor

TOTAL AREA: 143.76 m² - LIVING AREA: 70.03 m² -



THIS FLOORPLAN IS PROVIDED WITHOUT WARRANTY OF ANY KIND. GROUNDUP IMAGING DISCLAIMS ANY WARRANTIES, INCLUDING WITHOUT LIMITATION, ANY DIRECT OR INDIRECT WARRANTY OF ACCURACY OF DIMENSIONS.