

6/18-20 Scenic Highway Terrigal, NSW



### The Residence @ Infinity

Located in one of the most sought-after positions in Terrigal, this beautifully designed, free-standing home offers expansive ocean views from every room. Positioned on the cliff edge, this two-story residence boasts 4 spacious bedrooms, each with breath-taking views of the ocean. The bathrooms are finished in luxurious marble, while the sleek, modern kitchen features neutral tones that perfectly complement the home's sophisticated design.

**Price:** Contact Agent

**Council Rates:** \$462.20 p/q

**Water Rates:** \$265.75 p/q



**Brent Pilkington**

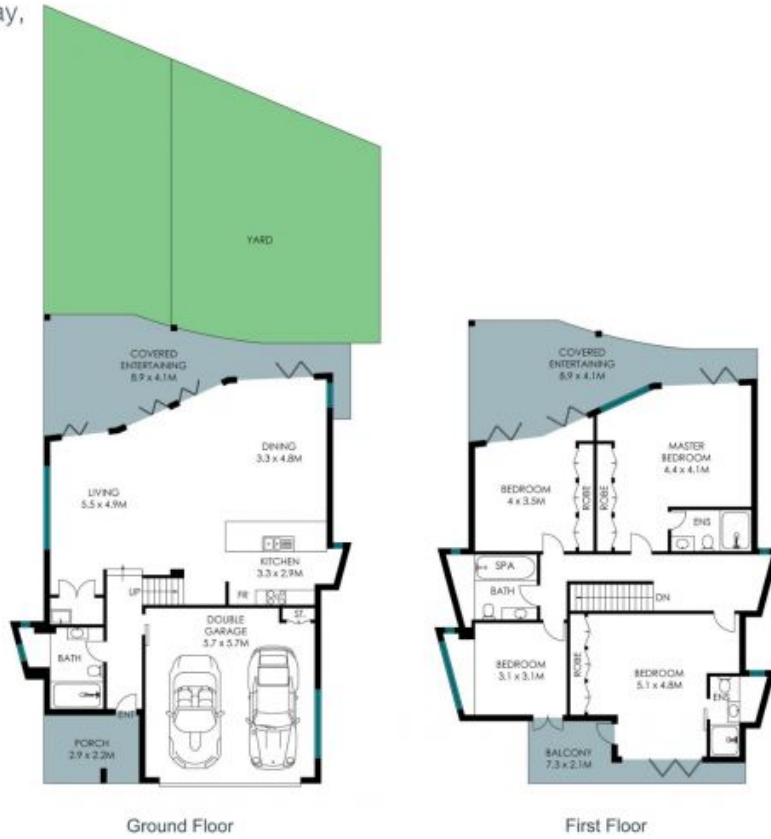
0410 872 541



**Sarah Gilchrist**

0413 412 859

6/18-20 Scenic Highway,  
Terrigal



**Total Living Area:** 277sqm  
**Total Yard:** 70sqm approx.

Ground Floor

First Floor



The site plan and floor plan are not to scale; measurements are indicative and in metres. Bushes and trees are placed for illustration purposes. Plans should not be relied on. Interested parties should make and rely on their own enquiries. All other information provided has been collected from reliable sources but cannot be guaranteed for accuracy.