

2/1 Forest Grove Epping, NSW



### Elegant North-Facing Retreat in Prime Epping Location

This luxurious modern apartment, positioned within the exclusive Luxe boutique complex, offers an exceptional blend of indoor/outdoor living. Boasting a north-facing covered oversize courtyard. This two-bedroom residence is designed for ultimate comfort and style. Located in a quiet street, approximately 600m from Epping Metro station, it offers unparalleled convenience with easy transit links to Chatswood, Macquarie Park, and Sydney CBD. Perfect for young professionals, downsizers, or investors, it's also within the sought-after school catchments of Epping Boys High, Cheltenham Girls High, and Carlingford High.

**Council Rates:** \$325.80 p/q

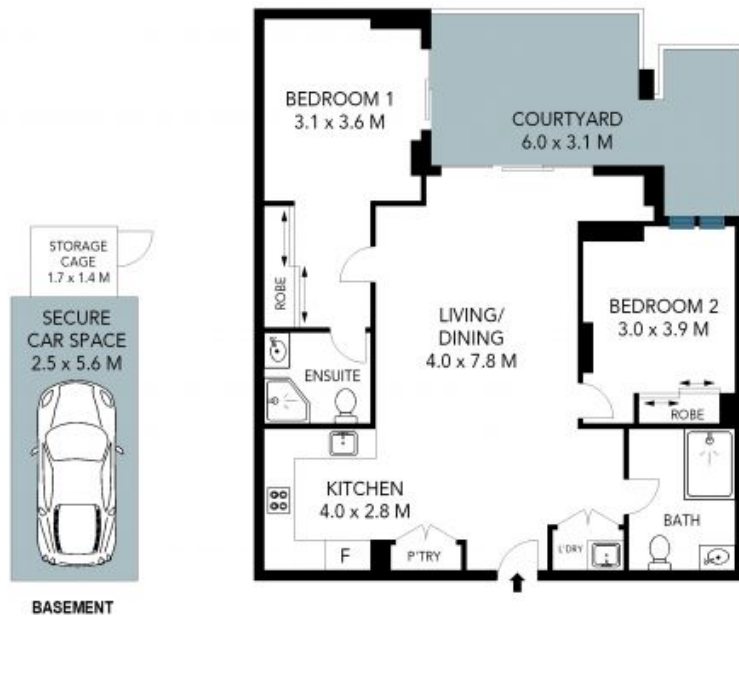
**Water Rates:** \$169.03 p/q

**Strata Rates:** \$886.80 p/q

**Stone Beecroft | Castle**

02 8866 1500

**Hill | Epping**



The site plan and floor plan are not to scale; measurements are indicative and in metres. Bushes and trees are placed for illustration purposes. Plans should not be relied on. Interested parties should make and rely on their own enquiries. All other information provided has been collected from reliable sources but cannot be guaranteed for accuracy.