



35 De Havilland Crescent Raby, NSW

3 

1 

1 

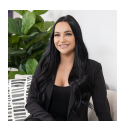
Conveniently located family home

Situated on a spacious 560sqm block, this charming home effortlessly blends comfort with functionality. Recently updated with brand-new blinds, stylish floorboards in the bedrooms, and a fresh coat of paint, this home offers a fresh and comfortable living space. Enjoy the ultimate privacy of having no rear neighbors, creating a peaceful retreat while still being conveniently close to essential amenities.

Price: \$650 per week

Bond: \$2,600

Available Date: 25/02/2025



Leasing Department

0481064443

Stone Macarthur