

30/2a Campbell Parade Manly Vale, NSW



Sun drenched garden apartment overlooking golf course

Immersed in park-like serenity just moments from vibrant coastal hubs, this recently renovated garden apartment in the sought-after 'Augusta' complex enjoys an unbeatable position adjacent to Warringah Golf Course. Taking in expansive tree-lined fairway and Manly Lagoon views, and offering bright, sophisticated interiors, a sunny entertaining terrace and high-end finishes throughout, this stunning lifestyle home delivers the perfect blend of luxury, privacy, and convenience.

Price: Contact Agent
Council Rates: \$424.57 p/q
Water Rates: \$169.03 p/q
Strata Rates: \$1,699.20 p/q



Chris Elliott

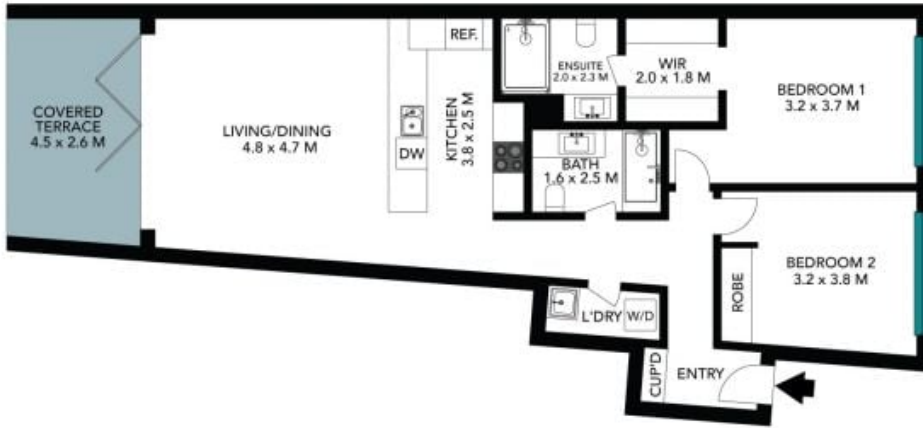
0410 416 066



Louise Ashdown

0414 764 108

30/2A Campbell Parade
Manly Vale



The floor plan is not to scale, measurements are indicative and in metres. Elements are not in position. Plans should not be relied on. Interested parties should make and rely on their own enquiries. All other information provided has been collected from reliable sources but cannot be guaranteed for accuracy.

30/2A Campbell Parade
Manly Vale



The floor plan is not to scale; measurements are indicative and in metres. All features included in this 3D plan are for inspiration purposes only. This is not an exact replica of the property or the position of exterior elements. Plans should not be relied on. Interested parties should make and rely on their own enquiries.