



6 Taronga Court Heritage Park, QLD

3 

1 

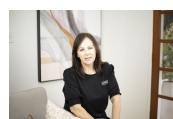
1 

Charming Home With Vehicle Side Access

Nestled in a peaceful court, this charming property on an amazingly useable 498m² block offers an inviting blend of privacy, style and practicality. With excellent street appeal, the home is perfectly positioned to maximise its spacious and private yard, complete with double-gated side access - perfect for vehicles or additional storage.

Price:

CONTACT AGENT



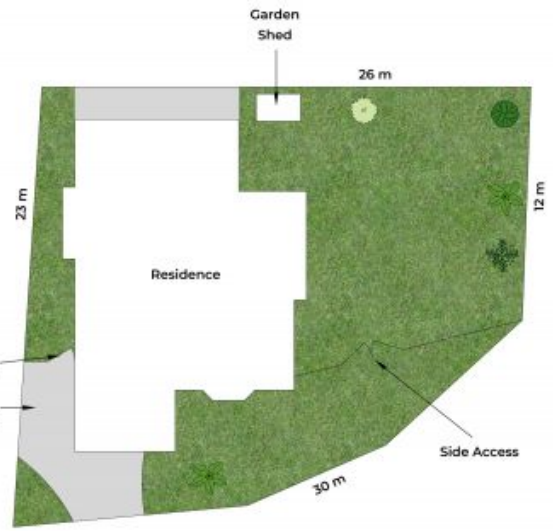
Leanne Gunn

0413 817 092



Lee Johnstone

0414 145 010



Site Plan

Floor Plan

Approx. Floor Area | Internal 131 m² | External 21 m² | Total 152 m²

Unless otherwise stated, all dimensions are in metres. Stair arrows indicate the upward direction. This plan and information contained within is for illustrative purposes only and not guaranteed to be exact. Interested parties should make their own enquiries.

